

TAKE
THE
LEAD.



4X4 EQUIPPED



TAKE
THE
LEAD.



4X4 EQUIPPED

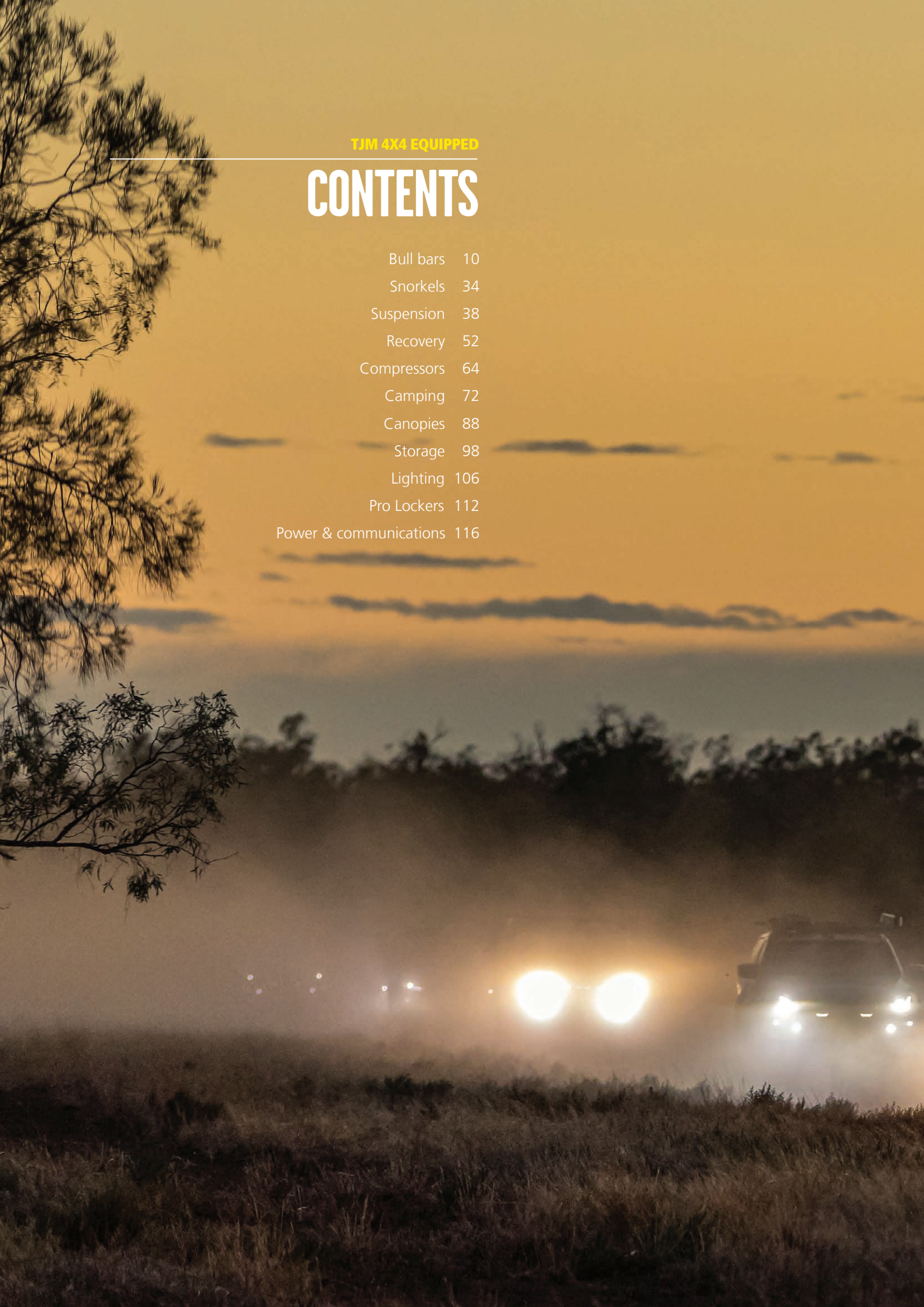




TJM 4X4 EQUIPPED

CONTENTS

Bull bars	10
Snorkels	34
Suspension	38
Recovery	52
Compressors	64
Camping	72
Canopies	88
Storage	98
Lighting	106
Pro Lockers	112
Power & communications	116



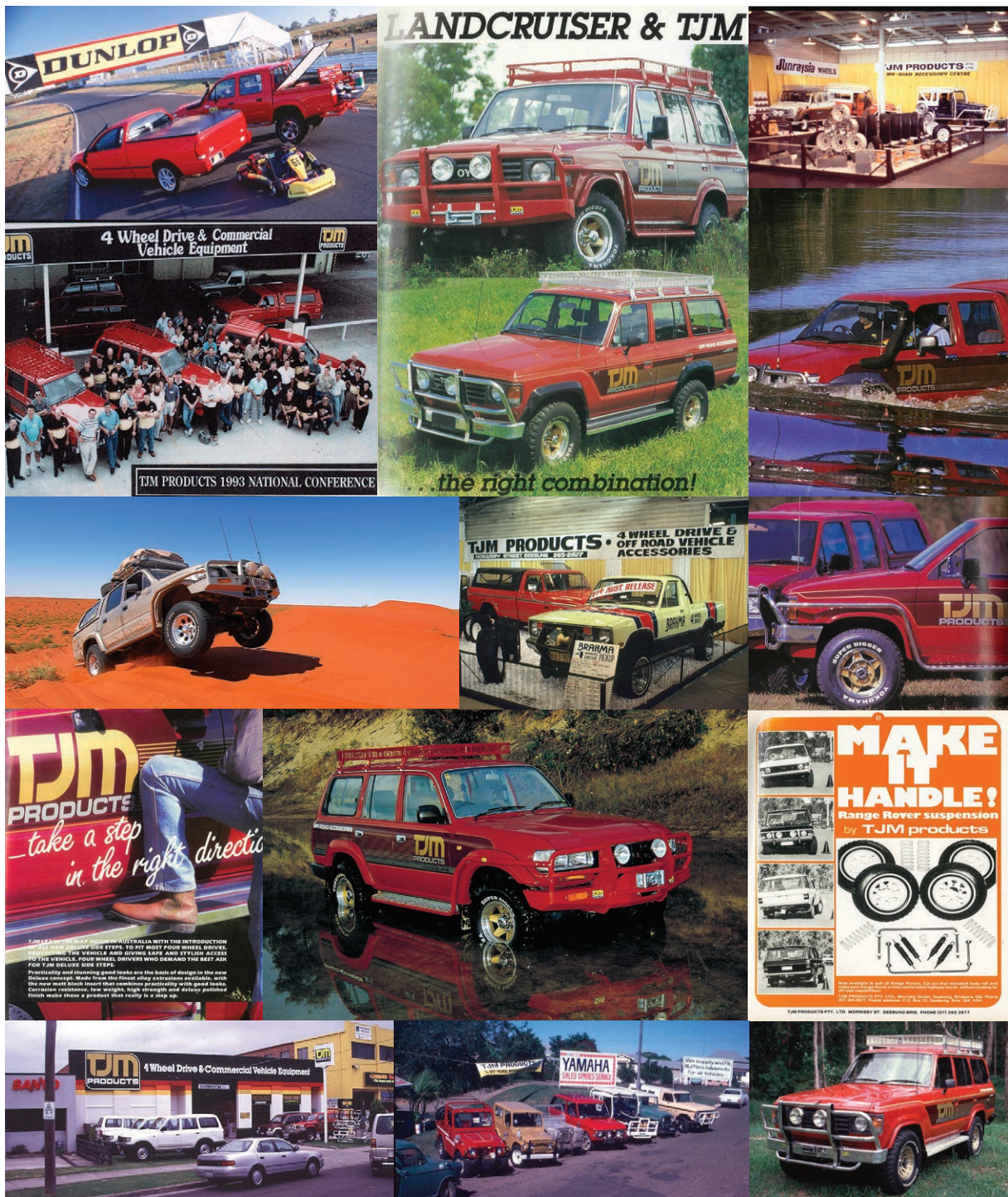


TAKE
THE
LEAD.

TJM
4X4 EQUIPPED

50
YEARS
ANNIVERSARY





TAKE THE LEAD WITH TJM.

TJM. Since 1973 it's stood for Taylor, Jones and Mollenhauer, but beyond those initials TJM means so much more. TJM means quality. TJM means innovation. TJM means pushing the boundaries and striding into the unknown with confidence. TJM means Take The Lead.

TJM 4x4 Equipped was founded almost half a century ago by three mates with an unshakable desire to explore the outdoors. While much has changed in the years since then, one thing hasn't: our belief in our mission to equip 4x4 owners and off-road explorers with the gear they need to take them further than ever before.

So, whether you're headed to a lonely red dune in the middle of the desert, a lush green hinterland along a thin dirt track or a sun-drenched campsite nestled by the beach, TJM is here to empower your adventurous side and make your 4x4 ready for anything.

TJM DESIGN PHILOSOPHY.

Every TJM product is crafted with functionality, form and quality at its core. Designed and engineered in Australia, our range is always expanding and improving thanks to our in-house team of passionate experts who deeply understand what 4x4 owners want and need. This experience and insight are what allows us to produce industry-leading equipment that's tougher than the places they're made for.





TESTED IN AUSTRALIA FOR AUSTRALIAN CONDITIONS.

To make sure our products are ready to perform at the highest level in the toughest conditions, we rigorously test them in the world's roughest off-road destination: Australia. In combination with advanced Finite Element Analysis (FEA) testing and stringent physical tests in our research and development workshop, our extensive real-world tests ensure that you can journey into the unknown with complete confidence.

TJM 4X4 EQUIPPED

PROTECTION

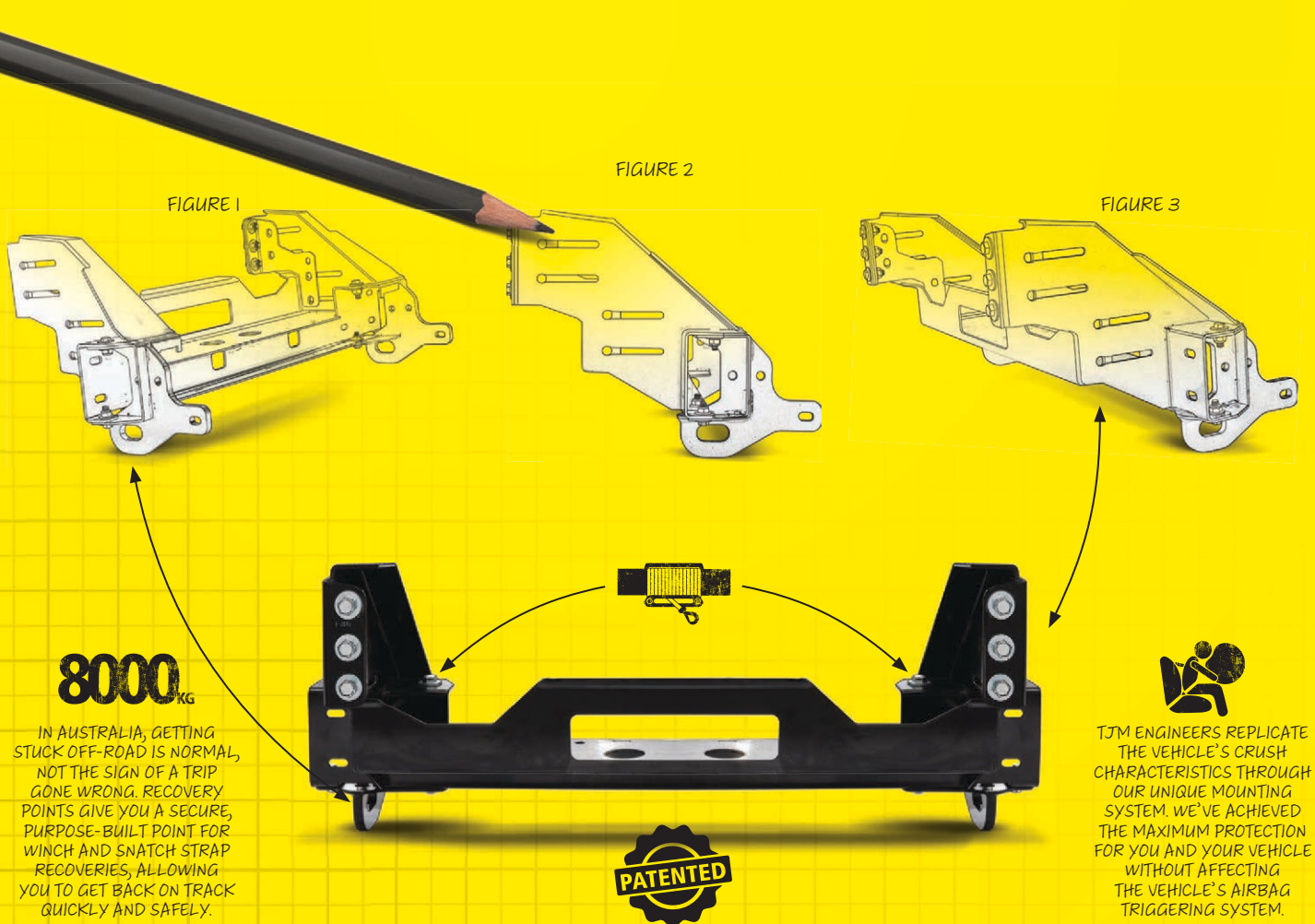




TRUE STRENGTH COMES FROM WITHIN.

Our innovative bull bar design is built upon an unbeatable foundation: our legendary winch frame mount system.

This uniquely strong winch frame not only gives your recovery winch a safe and secure home, but its connection to the vehicle's chassis is so strong that it allows us to include rated recovery points as standard with almost every TJM bull bar – giving you the strongest bull bar possible and an essential vehicle recovery tool all at once.



READY FOR ACCESSORIES.

As well as delivering essential vehicle protection, a TJM bull bar provides a strong and stable mounting point for a range of other 4x4 accessories.



MORE THAN JUST A PRETTY FACE.

A bull bar is there to protect your 4x4's vital components from damage when you're off the beaten track, allowing you to travel to all corners of the globe safely and confidently.

Unlike other manufacturers, TJM bull bars are individually designed to suit the unique shape of every vehicle they're made for, giving you a bar that enhances the overall look of your 4x4 while offering premium protection. Along with our patently strong folded channel and upswept wing design for optimal off-roadability, every TJM bull bar has key features that make it functional and useful in all off-road situations.



DUAL AERIAL PROVISION



RECOVERY JACK POINTS



LED FOG LIGHTS & INDICATORS*



COMPATIBLE WITH ALL SAFETY FEATURES†



ACCOMMODATES DRIVING LIGHTS



DESIGNED & ENGINEERED IN AUSTRALIA



ADR COMPLIANT



AIRBAG COMPATIBLE

3YR

3 YEAR WARRANTY



AUSTRALIA WIDE SUPPORT



MULTI-FOLD CHANNEL AND WING DESIGN, DELIBERATELY SPACED FOR MAXIMUM STRENGTH.

UPSWEPT WING PROVIDES IMPROVED APPROACH ANGLE OVER STANDARD.

*Fog Lights sold separately. †Model dependent.



WINCHES



COMMUNICATIONS

OUTBACK BULL BAR.

Boasting an all-steel construction that is designed to thrive in extreme conditions, the TJM Outback bar delivers unparalleled protection for your 4x4.

At the heart of the Outback bar is its tried and tested multi-fold channel, which has been strategically pressed and folded to maximise impact strength. Above this is 63mm^ø steel tubing and our characteristic upright cato straps, which extend all the way through the bumper channel to our patently strong chassis mount. These combine to deliver a broader area of protection, better impact resistance and unbeatable bar strength in the event of an animal strike or similar off-road impact – allowing you to roam anywhere in Australia with peace of mind.




**UNBEATABLE VEHICLE
PROTECTION**


**ALL-STEEL
CONSTRUCTION**


**CATO STRAPS FOR EXTRA
IMPACT RESISTANCE**

8000^{KG}
**RATED RECOVERY
POINTS STANDARD***


**COMPATIBLE WITH ALL
SAFETY FEATURES***


**READY FOR
ACCESSORIES**


**DESIGNED & ENGINEERED
IN AUSTRALIA**


**ADR
COMPLIANT**


**AIRBAG
COMPATIBLE**

3YR
**3 YEAR
WARRANTY**


**AUSTRALIA WIDE
SUPPORT**

**Model dependent.*



Why do we need bull bars?

The cooling system in any vehicle (which includes the radiator) is vital componentry that, when damaged, can instantly immobilise your rig. In rural, Outback and off-road areas in general, hazards that can strike your vehicle and damage the cooling system are common, while people who can come along and help stranded travellers are few and far between. This means damage to the front of an unprotected vehicle off-road is not only expensive and trip-ending, but it can be dangerous too. For this reason, a bull bar is a key investment and often one of the first accessories fitted to a 4x4. Essentially, a bull bar can save you from expensive repairs, keep your vehicle and its occupants safe while also making it possible for you to travel to more scenic and awe-inspiring off-road destinations with total confidence.



**"A BULL BAR CAN SAVE YOU FROM EXPENSIVE REPAIRS
AND KEEP YOUR VEHICLE AND ITS OCCUPANTS SAFE"**



*From Left: TJM Outback Bar for Ford Everest & Toyota LandCruiser,
TJM Outback Bar for Isuzu D-Max, TJM Outback Bar for Nissan Navara.*

Top: TJM Outback Bar for Toyota LandCruiser.

SIGNATURE BULL BAR.

Crafted from alloy and backed by our advanced bull bar design, the TJM Signature bar adds a high level of protection and undeniable style to any 4x4.

The TJM Signature bar effortlessly combines head-turning looks and proper vehicle protection in a package that's lighter than our steel bull bar options. At its base is a strategically folded channel that's been engineered for superior impact resistance, which then meets an eye-catching 76mm^ø central tube and 63mm^ø outer tubes to properly protect the front of your vehicle.

The TJM Signature Bar is available in either polished alloy or textured matt black finishes.



*From Top: TJM Signature Bar for Isuzu MU-X,
TJM Signature Bar for Toyota Hilux.*

Why choose a TJM Signature bar?

The TJM Signature bar is designed to protect and made to look great. At the core of the Signature bar is our famously strong winch frame mounting system, which creates an unbeatable foundation for the bar's lightweight alloy channel and tube

design. This winch frame mount system is so strong that it allows us to include 8000kg rated recovery points as standard, around which the rest of the bar is created. Once it's been designed, tested and manufactured, every TJM Signature bar is quality-controlled so you get the best possible alloy bull bar for your 4x4.




**STRONG YET
LIGHTWEIGHT**


**POLISHED ALLOY OR
TEXTURED BLACK FINISH***


**UNRIVALLED ALLOY
BUILD QUALITY**

8000^{KG}
**RATED RECOVERY
POINTS STANDARD***


**COMPATIBLE WITH ALL
SAFETY FEATURES***


**READY FOR
ACCESSORIES**


**DESIGNED & ENGINEERED
IN AUSTRALIA**


**ADR
COMPLIANT**


**AIRBAG
COMPATIBLE**

3YR
**3 YEAR
WARRANTY**


**AUSTRALIA WIDE
SUPPORT**

**Model dependent.*



VENTURER BULL BAR.

Featuring a powerful, strategically folded steel channel that's ready for accessories, you'll be ready to find a new challenge with the TJM Venturer bar.

Boldly angular and with a tapered wing design, the TJM Venturer bar's all-steel construction enhances the front of your 4x4 while delivering impact protection that's backed by its strategically folded channel. The TJM Venturer bar has hefty functionality thanks to its removable top hoop. Accented by stainless steel grilles that sit either side of our famously strong winch frame, the TJM Venturer bar's bite is just as tough as its bark.



**Model dependent.*

CHASER SERIES BULL BAR.

Packed with attitude and engineered to work and play hard, the TJM Chaser bar stands out in a crowd and up to the test.

The Chaser sports an aggressive and modern tube design while still delivering the protection and functionality 4x4 owners want and need. Featuring an imposing 63mm^ø upper tube and a 50mm^ø lower tube, which is positioned to create the optimal approach angle for overcoming obstacles, the Chaser is made to protect your vehicle's vital components and occupants while enhancing its off-road capability. Its innovative tube design makes the Chaser lighter than other steel bull bars in the TJM range, while it still retains key features like light, winch and antenna mounting capabilities.



**EXCELLENT VEHICLE
PROTECTION**



**ALL-STEEL
CONSTRUCTION**



**ULTRA RELIABLE
AND DURABLE**

8000^{KG}

**RATED RECOVERY
POINTS STANDARD**



**READY FOR
ACCESSORIES**



**DESIGNED & ENGINEERED
IN AUSTRALIA**



**ADR
COMPLIANT**



**AIRBAG
COMPATIBLE**

3YR

**3 YEAR
WARRANTY**



**AUSTRALIA WIDE
SUPPORT**







COVERT BAR.

The TJM Covert bar blends stealth and style to seamlessly transform your 4x4. With killer looks and the tools you need for your next assignment, it's a subtle weapon that's easy to miss and impossible to forget.

The Covert bar is constructed from a high-grade alloy that makes it strong yet incredibly lightweight too. Plus, it features tapered side wings to create the optimal approach angle for overcoming obstacles off-road. The Covert bar is winch compatible, can fit light bars up to 1025mm and includes dual aerial mounting locations.

A front steel underbody guard comes standard with the purchase of the TJM Covert bar, adding extra protection and a cohesive, powerful look to the front end of your 4x4. Comprehensive engineering has allowed for the retention of factory recovery points, while the Covert bar is also ADR compliant and airbag compatible.





TRADESMAN BULL BAR.

Combining a proven bull bar design with extraordinary functionality, the TJM Tradesman bar is equipped for any job.

The Tradesman bar packages classic TJM design cues with practical features in a simple form factor. Starting with a strategically folded channel for its base, the Tradesman bar is crowned by a thick 76mm^ø central tube and 63mm^ø outer tubes that protect the front of your vehicle. Better yet, the TJM Tradesman bar retains the all-steel construction and many off-road capabilities of the deluxe TJM Outback bar – ensuring you're prepared on the job site or off the beaten track.



**EXCELLENT VEHICLE
PROTECTION**



**ALL-STEEL
CONSTRUCTION**



**ULTRA RELIABLE
AND DURABLE**

8000^{KG}

**RATED RECOVERY
POINTS STANDARD***



**READY FOR
ACCESSORIES***



**DESIGNED & ENGINEERED
IN AUSTRALIA**



**ADR
COMPLIANT**



**AIRBAG
COMPATIBLE**

3YR

**3 YEAR
WARRANTY**



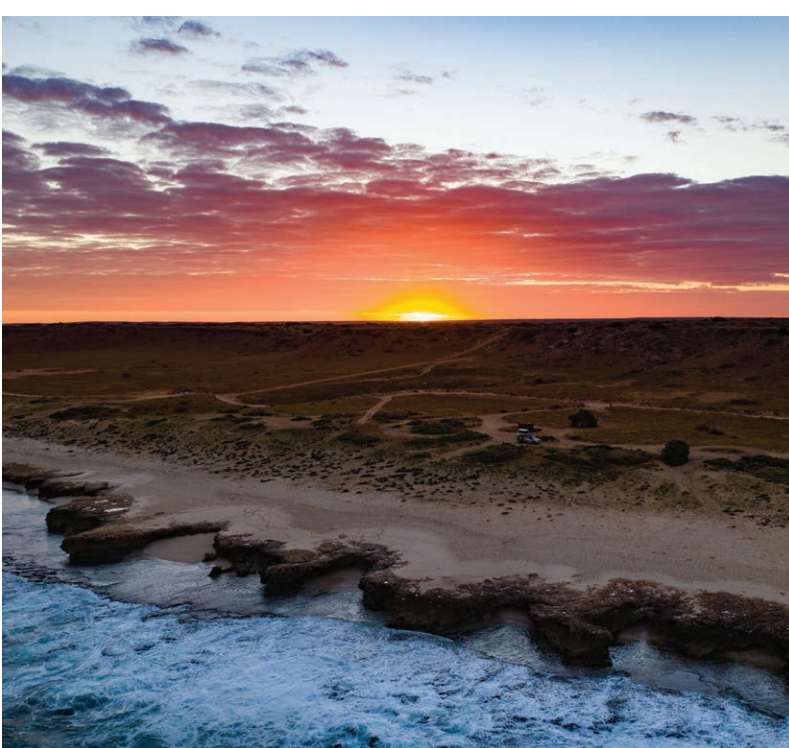
**AUSTRALIA WIDE
SUPPORT**

**Model dependent.*



SEAN SCOTT: THE EXPERT EXPLORER

Famed photographer Sean Scott has travelled to almost every corner of the country with a camera in hand. So, what are his favourite destinations in each of Australia's most iconic landscapes?



Beach: Lucky Bay, WA

“Anyone who visits Lucky Bay is going to get a taste of some of the world's best scenery and wildlife, guaranteed.”

There's perhaps nowhere more postcard-ready in Australia than Lucky Bay. Everything from its electrifyingly blue waters to its blinding white sand and hopping inhabitants seem to be cut from a storybook called *Too Good To Be True*, and yet it very much is. In fact, Lucky Bay is a pearl amongst a string of beachside jewels in the region around Esperance, which makes the way it stands out all the more impressive.

Coastal: Coral Coast, WA

“The region where the desert meets the Indian Ocean – this place is hard to beat.”

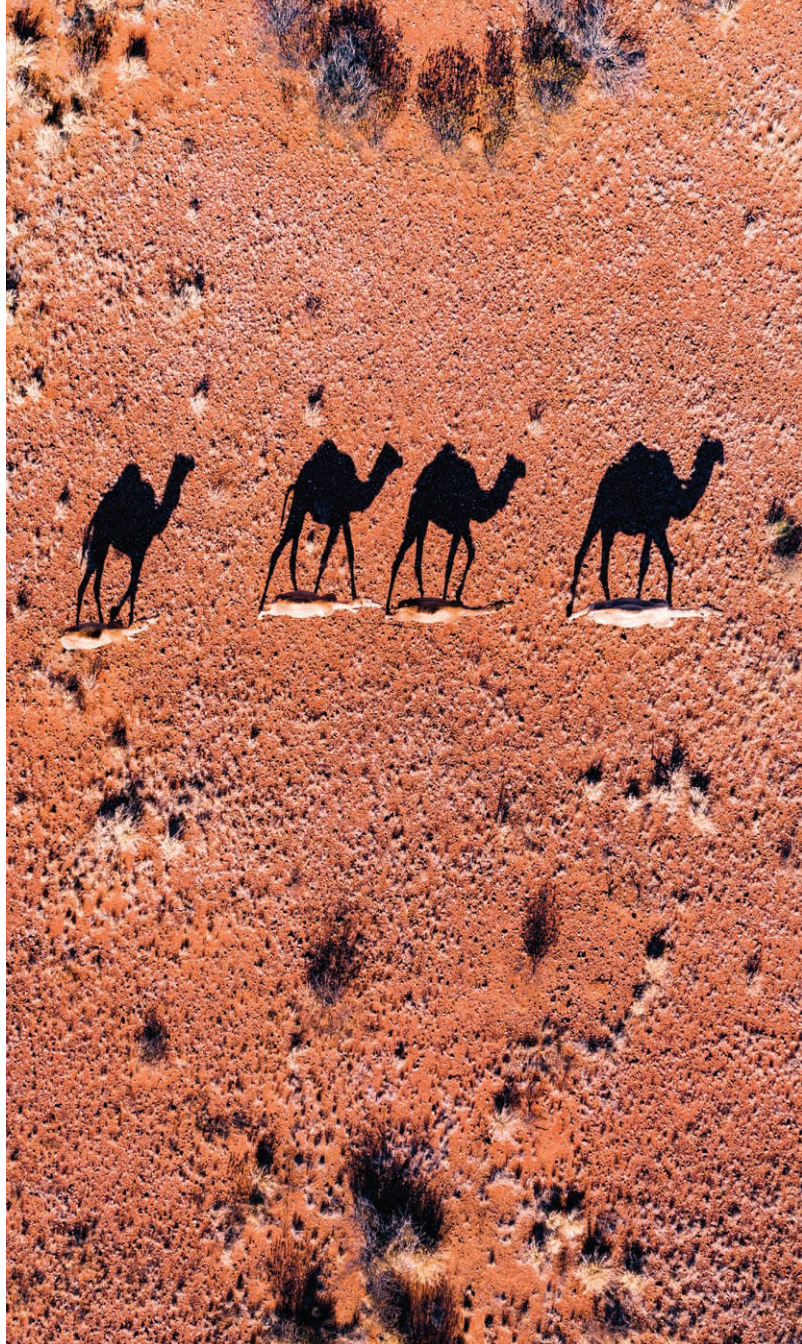
The Coral Coast is rich in more ways than one: known inland for its red dirt, white beaches and instantly recognisable landforms, one of the most diverse and action-packed marine environments in the entire world sits off its coastline too. Visits to the perfectly-named Shell Beach, the otherworldly Pinnacles or the ancient gorge country in Kalbarri National Park are all uniquely unforgettable stops in the region.



Desert: The Outback Way, WA NT & QLD

“The centre of Australia is so full of amazing desert landscapes that it’s hard to pinpoint one that sticks in my memory most.”

Known as Australia’s biggest shortcut, the 2,800km Outback Way cuts through central Australia and across some of its most awe-inspiring desert landscapes. The journey through the Great Victoria Desert – with its red sands, grassy plains and salt lakes – is a particular highlight. In addition to pure desert scenery, travellers on the Outback Way get to enjoy iconic sights like Uluru, Kata Tjuta and Tjorita, while potential side-trips include the epic Gunbarrel Highway for those looking for more white-knuckle four-wheel driving.



Semi-arid: Winton, QLD

“The country around Winton, which is full of jump-ups and prone to stunning sunsets, is one of my favourite places to explore.”

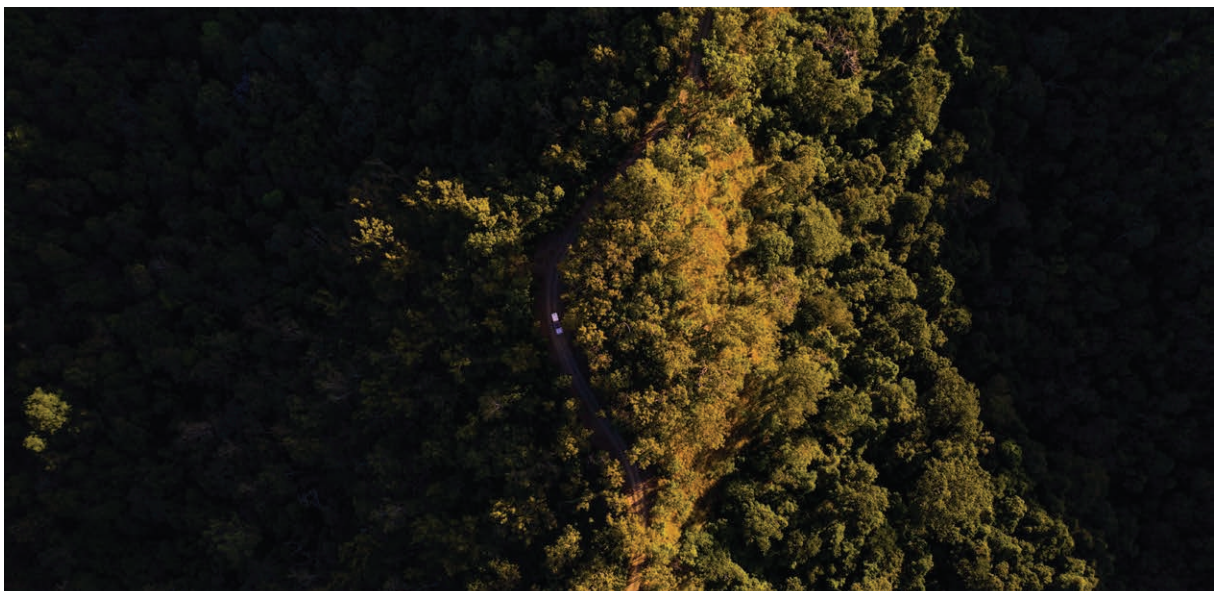
In the Outback but not quite the desert, the area around Winton is full of history and spectacular scenery. The landscape is dotted with flat-topped mesas and Mitchell grass, all shades of red and orange and is home to the world’s oldest dinosaur stampede site – which showcases over 3,300 dinosaur footprints from almost 100 million years ago. The region is stark yet breathtaking, making it a perfect inspiration for anyone with a camera in hand.



Mountainous: Tasmania

“Simply put, Tasmania’s mountains are unlike anything else you’ll find on the mainland.”

Known more for its hiking than its four-wheel drive touring, Tasmania’s mountains are unforgettable nonetheless. Its climate and semi-European landscapes give Australia’s island state a unique quality, which is evidenced by iconic peaks like Cradle Mountain and Mount Ossa, which are an eyeful whether they’re snow-capped or covered in green. Combined with its iconic coastal tracks, charming towns and the touring routes that connect them, Tasmania and its mountain ranges are a completely different kind of adventure in the best way possible.



Tropical: Cooktown region, QLD

“As tropical as it gets. There’s so much to explore in the region that one trip is never enough.”

Nothing says tropical quite like Tropical North Queensland. Exploding with bright green life that’s perfectly in time with the swing of the seasons, the wilder areas around Cooktown distil the best parts of the region with real swagger. The palm-fringed coast has sparkling waters and bright sands, while inland the Daintree rainforest awaits with its dense canopy and denser undergrowth. A drive along the Bloomfield Track and up the clay-ridden CREB Track give four-wheel drivers a front-row seat to the area’s green heart, while beyond them is the iconic Old Telegraph Track.



Forest: Boranup Forest, WA

“This section of South West WA is truly unique. A drive through the karri forest is quite incredible and there are plenty of great images to take.”

South West Western Australia is famous for its beaches, but the Boranup Forest can make just as big an impression. In some ways, the contrast between these environs is what makes the forest all the more striking – one minute you’re enjoying the sun and open coastline and the next you’re driving along a lonely dirt track among thousands of tall timbers. The karri is actually one of the tallest hardwoods in the world (many grow over 50m tall), which is a fact that points to why the Boranup Forest is so memorable to visitors.

Images & Story by Sean Scott.

SIDE BARS & SIDE STEPS.

Shield your 4x4's broad side and sill panels from flying debris and uneven terrain with TJM Side Bars and TJM Side Steps.

Ensure you're protected against the unexpected with TJM's range of adventure-ready side bars and side steps. The latest generation of TJM Side Bars and TJM Side Steps are made from sturdy 63mm^Ø tubing for supreme protection, while TJM Side Steps feature highly durable alloy checker treadplate to make accessing your vehicle quick and safe.



63^Ø
63MM DIAMETER
STEEL TUBE

HIGH STRENGTH
STEEL CONSTRUCTION

EXCELLENT IMPACT
STRENGTH

DESIGNED & ENGINEERED
IN AUSTRALIA

TJM SIDE BARS GIVE YOU ADDED
PANEL PROTECTION, DAMAGE
DEFLECTION AND STRUCTURAL
STRENGTH FOR YOUR BULL BAR
AND SIDE STEPS.

TJM SIDE STEPS GIVE YOUR 4X4 MUCH-NEEDED
PROTECTION WHILE ALSO MAKING VEHICLE AND ROOF
CARGO ACCESS SAFER AND SIMPLER.

ADR
COMPLIANT

AIRBAG
COMPATIBLE

3YR
3 YEAR
WARRANTY

AUSTRALIA WIDE
SUPPORT





MADE TO BE MODULAR.

TJM Side Steps and TJM Side Bars are uniquely designed to be modular. This means a TJM Side Step can be fitted independently of a TJM Side Bar, giving you the freedom to have side steps fitted to your 4x4 with the option of adding side bars later.



ROCK SLIDERS.

Available for select vehicles, TJM Rock Sliders provide comprehensive side protection for travellers who love to tackle challenging terrain. Multiple mounting positions ensure your vehicle is supported across the entire length of the rock slider, which features a textured black alloy tread and lower in-fill sections, while it's easy to integrate TJM Seeker Series Rock Lights for added security and low-down illumination.



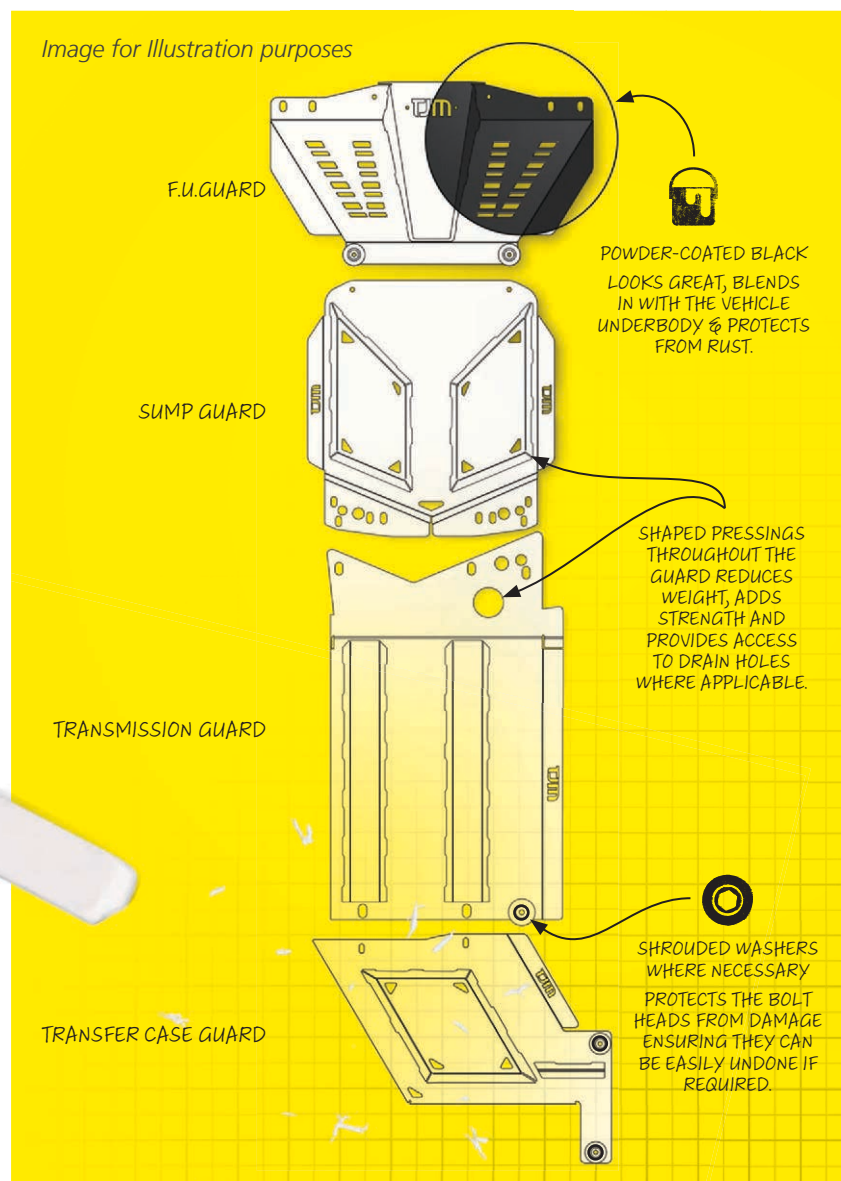
Right: TJM Seeker Series Rock Lights fitted to the TJM Rock Sliders.

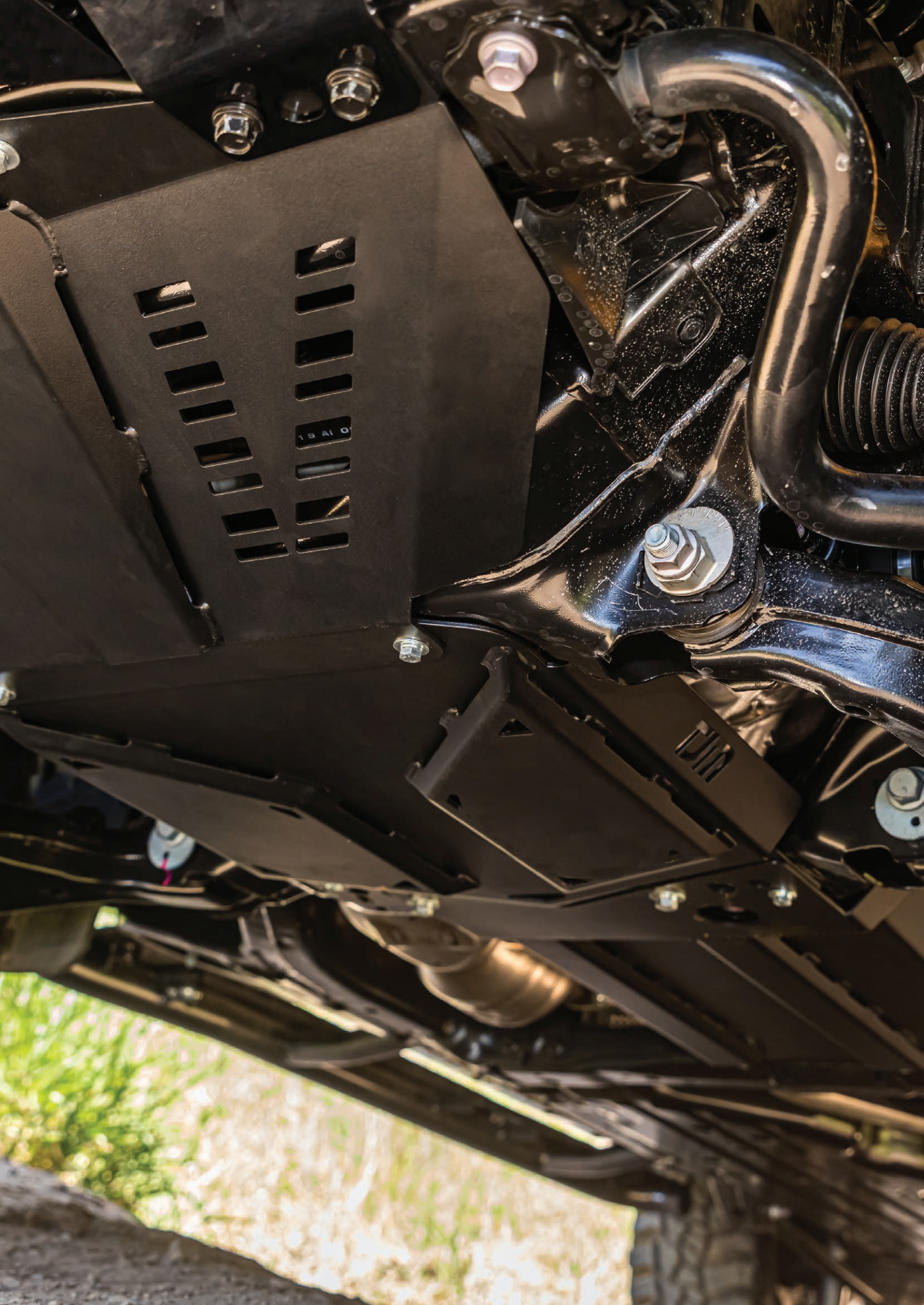
TJM 4X4 EQUIPPED

UNDERBODY GUARDS

Underbody damage can put an end to any off-road trip, but you can protect the vital components of your vehicle and keep the adventure going with TJM's range of underbody guards.

TJM Underbody Guards are constructed from 3mm-thick steel that's been press folded to maximise impact resistance, while their shaped pressings reduce the weight and increase the strength of each guard. Finally, each TJM Underbody Guard is finished with a black powder coat that delivers a clean look and excellent corrosion resistance, allowing you to worry less about what's beneath you and more about what's in front of you.







LANCER

4x4



RANGER

JM4X4

FORD



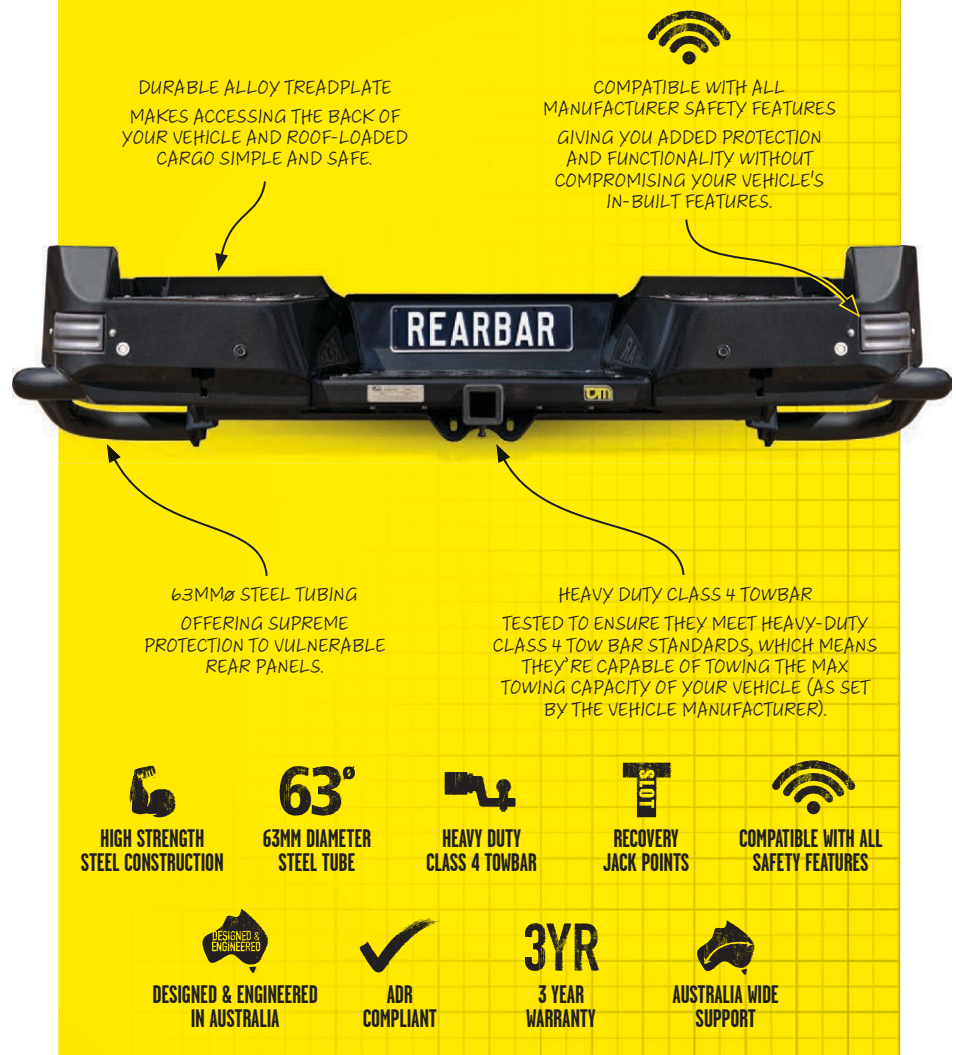
TJM 4X4 EQUIPPED

REAR BARS

A TJM Rear Step Tow Bar instantly adds extra protection and functionality to any 4x4.

Whether you're on a bumpy track or in a carpark, the back of any 4x4 is susceptible to panel and bumper damage. Thanks to its thick 63mm[®] steel tubing and durable alloy treadplate, a TJM Rear Step Tow Bar offers supreme protection while making rear vehicle access simple and safe. Each rear bar includes T-slot recovery jack points and is also compatible with the TJM Recovery Hitch. Plus, our rear bars meet Heavy Duty Class 4 tow bar standards so you can safely tow trailers, caravans and more.

Image for illustration purposes only. TJM Rear Bars may vary depending on vehicle.



TJM 4X4 EQUIPPED

GET EQUIPPED FOR ANYTHING



4X4 FITOUTS.

Every TJM distributor is equipped with a fully functional workshop and experienced fitment staff that can help get your 4x4 ready for whatever lies ahead. After purchasing accessories like a bull bar, recovery winch, side steps, canopies and more, simply ask our team to organise fitment of your new gear to your vehicle.



SUSPENSION & GVM UPGRADES.

Upgrading your vehicle's suspension system or Gross Vehicle Mass (GVM) enhances your 4x4's on and off-road potential by increasing its ride, comfort, handling and load-carrying capability. As suspension experts, TJM can tailor a suspension solution to suit you, your vehicle and the loads you need to carry.



COMMUNICATIONS INSTALLATIONS.

Tools like antennas and UHF radios combine to give you the ability to communicate with other travellers and get help in emergency situations when in remote areas. Find out which setup is right for you and get it installed in your vehicle quickly and professionally by visiting a TJM distributor and consulting with our experienced team members.

NATION WIDE NETWORK OF 4X4 SPECIALISTS.

At TJM, we design, test and manufacture a huge range of 4x4 accessories to empower your adventurous side. Beyond this though, our nation-wide network of stores and distributors are filled with expert staff and services that make TJM a one-stop-shop for all your off-road, touring and camping needs – helping you to get off-road sooner and travel further than ever before.



DUAL BATTERY SYSTEM SETUPS.

If you want to have instant access to power from your vehicle – whether it's to power camping lights, a fridge or various 12v appliances – an auxiliary power system is essential. Talk to your local TJM distributor to find the right system and to get our expert team to install it, giving you peace of mind and the power to go further.



STORAGE SOLUTIONS.

You can store more and do more with your 4x4 thanks to TJM's range of exceptional storage solutions. Ranging from customised drawer systems to ute canopies that seamlessly integrate with your vehicle, TJM has the perfect storage solution to help you carry more gear, access it faster and protect it better.



PRE-TRIP INSPECTIONS.

Any off-road trip can be cut short if your vehicle is not properly prepared for the journey. Guard yourself and your vehicle from some potential surprises by getting our expert staff to have a look at the state of your 4x4 before you hit the road.

TJM 4X4 EQUIPPED


SNORKELS





POLYETHYLENE SNORKELS.

All Airtec polyethylene snorkels are manufactured from high-quality polyethylene (UV20-UV24) that's been UV stabilised for superior longevity and strength. Each snorkel is engineered and tested to supply the correct volume of air to the engine, while our Airtec ram intake is incredibly effective at separating rain or moisture from the airstream before it enters the engine. Available in two different air ram styles – the classic or wedgetail – every TJM Airtec Snorkel is designed specifically for each vehicle application.



DESIGNED FOR EXTREME TEMPERATURES
COMPONENTS THAT ARE HIDDEN UNDERNEATH THE BONNET ARE SUBJECTED TO TEMPERATURES OFTEN EXCEEDING 100°C. TJM AIRTEC SNORKELS USE MATERIALS THAT CAN WITHSTAND EXTREME TEMPERATURES.

COLOUR FAST
TJM USES A PROCESS CALLED 'COLOUR COMPOUNDING' WHERE THE PIGMENT IS MIXED INTO THE MOLTEN RESIN BEFORE THE AIRTEC SNORKEL IS MOULDED. THIS ENSURES EVEN COLOUR SATURATION AND PREVENTS RUBBING OFF OR BLEEDING.

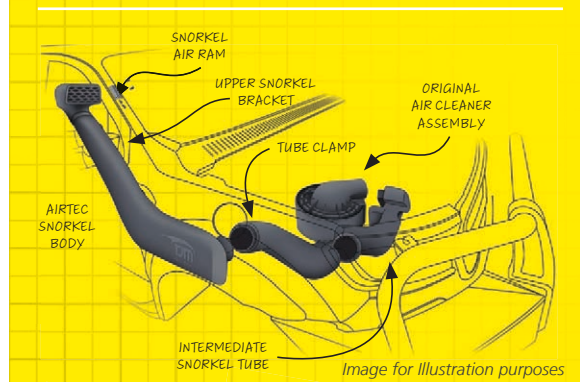



Image for illustration purposes



316 GRADE stainless

HIGH-GRADE 4" 316 STAINLESS STEEL TUBING, AVAILABLE IN BRUSHED STAINLESS OR SATIN BLACK POWDER COAT FINISHES.



STAINLESS SNORKELS.

Crafted from high-grade 316 stainless steel and engineered to deliver style and performance, a TJM Airtec Stainless Snorkel is guaranteed to toughen up your 4x4. Every snorkel in the range features a 4-inch-diameter tube for improved air delivery and is available in a brushed stainless steel or satin black powder coat finish. Meanwhile, the snorkel's socket and intermediate tube is built from the same highly durable and UV-resistant polyethylene as the TJM Airtec Snorkel for added durability and weather resistance.



Airtec Snorkel with standard air ram - Ford Ranger.



Airtec Snorkel with wedgetail air ram - Ford Ranger.



THE AIRTEC ADVANTAGE.

Here's why TJM Airtec Snorkels are so effective:

1. Rainwater drops entering the air ram of a TJM Airtec Snorkel are captured at the back of the inside curved surface, pool around the base of the air ram and are dispersed through the drain holes.
2. If any minute rainwater droplets find their way into the snorkel body, they will be atomised at the air filter.
3. Finally, the last line of defence is the original water drain in the vehicle's air cleaner assembly.

TJM 4X4 EQUIPPED

SUSPENSION





XGS ROAMER.

A XGS Suspension upgrade will instantly improve your 4x4's on-road comfort and off-road potential.

XGS Suspension is designed to elevate your vehicle's core potential and your own driving experience. An XGS Suspension upgrade will make your 4WD more comfortable over changing terrain while improving how it responds while braking, accelerating and cornering. Built for heavy-duty use, XGS take twin-tube shock absorbers to the next level: nitrogen charged and featuring a 18mm hard-chromed piston rod and 40mm big bore piston, they're also able to dynamically adapt to changes in terrain and driving conditions thanks to their multi-stage velocity-controlled valving. Meanwhile, in addition to added ground clearance for touring and four-wheel driving, XGS Suspension offers outstanding load-carrying and towing capabilities compared to your vehicle's standard suspension system.

XGS RUGGED.

XGS Rugged is a monotube, nitrogen charged shock absorber, created for high performance and optimal fade resistance. An XGS Rugged upgrade will ensure you are experiencing better damping control at varying speed, while your 4WD will be capable to adjust to any terrain. The design of the Rugged shock absorber features an inverted rear, which is a proactive measure to combat the likelihood of stone damage, as the main body of the shock absorbers has been moved up in to the vehicle body and is exposed to less risk. Also featuring a 52mm piston bore, this increased size gives the vehicle up to 143% more surface area to operate over a factory fitted twin tube shock absorber, while also delivering on a product that is not ride-height sensitive for damping control.

XGS Roamer

Piston (size) **35-40MM^Ø***

Piston Rod (size) **18MM^Ø**

Suspension Lift **0-50MM***

Construction **Twin Tube**

Nitrogen Charged **Yes**

**Vehicle dependent.*

XGS Rugged

Piston (size) **52MM^Ø**

Piston Rod (size) **18MM^Ø**

Suspension Lift **40-75MM***

Construction **Mono Tube**

Nitrogen Charged **Yes**

**Vehicle dependent.*



HIGH GRADE DAMPING OIL
PREVENTS THE OIL FROM FOAMING
AND EXTENDS SHOCK LIFE.



MULTI-STAGE VELOCITY
CONTROLLED VALVING
AUTOMATICALLY ADJUSTS
TO TERRAIN TO DELIVER
ALL-ROUND PERFORMANCE.



HIGH DURABILITY RUBBER BUSHES
ENSURES ENHANCED FLEXIBILITY, NOISE
REDUCTION AND SHOCK LIFESPAN.



40MM PISTON BORE
LARGE BORE DIAMETER MEANS
MORE OIL WHICH IMPROVES
DAMPING POTENTIAL AND
SHOCK DURABILITY.



2MM INNER / 1.5 OUTER TUBE
WALL THICKNESS
PROTECTS THE SHOCK FROM
INTERNAL DAMAGE CAUSED BY
FLYING DEBRIS.



52MM PISTON BORE
A LARGER BORE DIAMETER
MEANS EVEN MORE OIL WHICH
VASTLY IMPROVES DAMPING
POTENTIAL AND SHOCK
DURABILITY.



3MM TUBE
WALL THICKNESS
PROTECTS THE SHOCK FROM
INTERNAL DAMAGE CAUSED BY
FLYING DEBRIS.

XGS REMOTE.

Get a premium on and off-road driving experience with XGS Remote Suspension.

Remote's combination of truly innovative features and rugged construction delivers superior performance across all conditions. With Remote, you have full control over the damping force of both rebound and compression, which is made possible by its innovative 8-stage adjuster ring - allowing you to uniquely adjust your suspension to suit your specific vehicle, load and journey. XGS Remote is nitrogen charged and features a large 52mm diameter piston bore, steel-braided hose and sleek single-wall monotube construction to enable enhanced oil cooling for ultimate reliability. Plus, its patented hydraulic bump-stop progressively increases damping resistance during extreme suspension loads to maximise impact control. Built with exceptional longevity and heavy-duty use in mind, XGS Remote Suspension is ideal for long-term touring and rugged Outback conditions.



XGS Remote

Piston (size) **52MM^Ø**

Piston Rod (size) **20MM^Ø**

Suspension Lift **40-75MM***

Construction **Adjustable Mono Tube**

Position Sensitive Damping **Yes**

Nitrogen Charged **Yes**

**Vehicle dependent.*

FRONT STRUTS FEATURE
PRECISION ENGINEERED
TEFLON COATED STAINLESS
STEEL SPHERICAL
BEARINGS.



HAND ADJUSTABLE
CONTROL OVER
COMPRESSION &
REBOUND.



HIGH GRADE DAMPING OIL
PREVENTS THE OIL FROM FOAMING
AND EXTENDS SHOCK LIFE.



MULTI-STAGE VELOCITY
CONTROLLED VALVING
AUTOMATICALLY ADJUSTS
TO TERRAIN TO DELIVER
ALL-ROUND PERFORMANCE.



HIGH DURABILITY RUBBER BUSHES
ENSURES ENHANCED FLEXIBILITY, NOISE
REDUCTION AND SHOCK LIFESPAN.



STEEL BRAIDED
HIGH-TEMPERATURE
OIL HOSE
DESIGNED TO HANDLE
EXTREME OFF-ROAD
CONDITIONS FOR
EXTENDED PERIODS
OF TIME.



STONE GUARD
PROTECTS SHAFT
& SEAL
ENGINEERED AND
CONSTRUCTED TO HANDLE
AUSTRALIA'S TOUGHEST
OFF-ROAD DESTINATIONS.



52MM PISTON BORE AND
REMOTE RESERVOIR
TWICE THE OIL VOLUME OVER
ROAMER/RUGGED. THIS
DRASTICALLY IMPROVES
DAMPING POTENTIAL AND
SHOCK DURABILITY.



3MM TUBE
WALL THICKNESS
PROTECTS THE SHOCK FROM
INTERNAL DAMAGE CAUSED
BY FLYING DEBRIS.

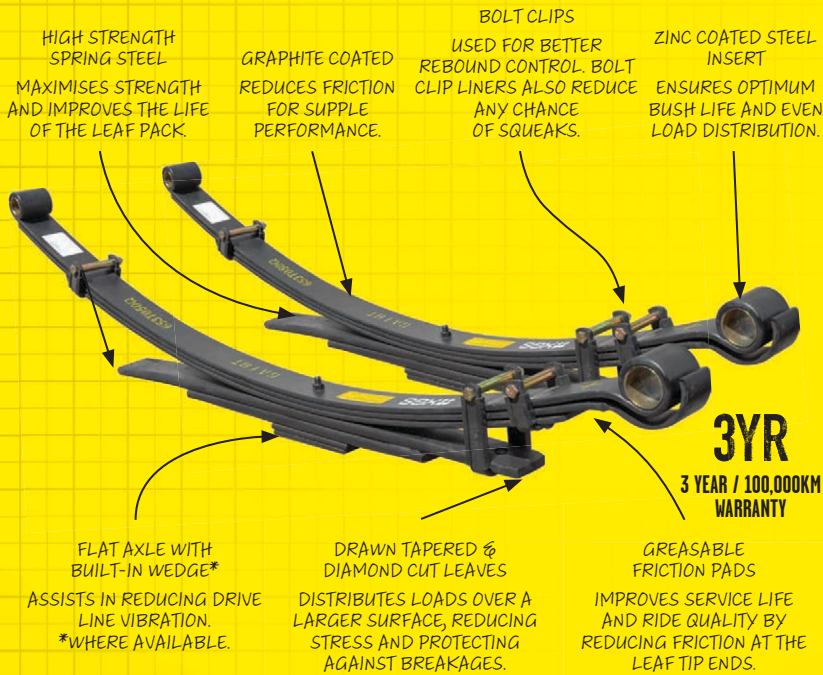


8 STAGE ADJUSTMENT
COMPRESSION & REBOUND
2-WAY ADJUSTABILITY
GIVES YOU UNPRECEDENTED
CUSTOMISABILITY OVER YOUR
4x4'S RIDE CHARACTERISTICS.



POSITION SENSITIVE DAMPING
PROGRESSIVELY INCREASES
DAMPING RESISTANCE DURING
EXTREME SUSPENSION LOADS
TO MAXIMISE IMPACT CONTROL.

XGS LEAF SPRINGS.



RAISED (LBA 150KG)



RAISED (LBA 300KG)

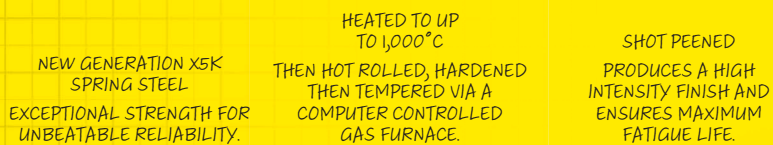


RAISED (LBA 450KG)

LBA (LOAD BEARING ACCESSORIES) RATING MAY VARY.

Leaf Spring features are vehicle dependent.

XGS COIL SPRINGS.



3YR

3 YEAR / 100,000KM WARRANTY

FULLY SCRAGGED & LOAD TESTED TO ELIMINATE SPRING SAG.

PRE TREATMENT PHOSPHATE DIPPED FOR MAXIMUM CORROSION PROTECTION.

EPOXY POWDER COATING ACHIEVES THE MOST DURABLE FINISH AND PRESENTATION.



RAISED (LBA 0-50KG) RAISED (LBA 50-80KG) RAISED (LBA 80KG+)
LBA (LOAD BEARING ACCESSORIES) RATING MAY VARY.





Why is suspension so important in 4WD vehicles?

Vehicle suspension is a complicated piece of gear but understanding what it does and why it's important doesn't need to be.

Essentially, suspension controls the weight of your car and its contact with the road. This means that suspension dictates how well your 4x4 can:

1. Carry loads and pull something in tow.
2. Balance a comfortable ride with predictable handling.
3. Respond well while braking, accelerating and cornering.
4. Overcome obstacles and changes in terrain in off-road conditions.

The difference between good vehicle suspension and poor vehicle suspension becomes starkly apparent off-road, where harsh conditions and consistently testing changes in terrain will expose any deficiencies in your suspension system. These deficiencies show up as a lack of load-carrying and off-road capability, a rough ride and poor handling, while they can also have downstream effects on the lifespan of other parts of your 4x4.

This means that, if you plan on heading off-road, a built-for-purpose suspension system is essential. TJM suspension products, which are designed and tested to thrive in the Australian Outback, span a full range of configurations to give your vehicle a suspension setup that suits your everyday and off-road travel requirements. By fitting the correct system to your 4WD, you can ensure a better driving experience and reveal greater off-road potential.



XGS Leaf Springs

XGS Leaf Springs provide a significant improvement to your vehicle's load-carrying ability, towing safety, ride comfort and directional stability. All XGS Leaf Springs feature greaseable friction pads for longer service life and improved ride quality, while their diamond cut leaves reduce load stress and protect against breakage. Utilising high-grade spring steel for superior off-road flexibility, XGS Leaf Springs offer better traction through increased wheel travel and ground clearance.

XGS Coil Springs

Coil springs support your vehicle's weight all day, every day, which makes them a crucial component of any vehicle suspension system. XGS Coil Springs – available in a linear coil or progressive coil design – are manufactured on computer-controlled coiling machines, scragged before and after shot peening, load-tested and then finished with a durable powder-coated finish to ensure exceptional quality and performance.

COMPONENTRY.

All suspension systems are more than just shock absorbers and springs. A good suspension system uses high-quality components throughout, each of which combine to work in harmony and deliver optimal performance and reliability in a wide range of conditions.



Upper control arms

The XGS fully fabricated upper control arms are 100% bolt-on and designed to work with any suspension lift of 30 to 75mm. XGS fabricated arms were designed to bring your factory suspension geometry back to OE specifications so you can correctly align your vehicle while maximizing over all suspension travel.



U-bolts

It is a must to replace U-bolts when new springs are installed. XGS U-Bolts are matched in length to the XGS Leaf Spring range to accommodate the increased stack height of the spring.



Panhard rods

XGS Adjustable Panhard Rods are designed to help stop your axle from moving by enabling you to set the rod to the most appropriate position for whatever suspension type or lift height your 4WD has.



Greaseable shackles & pins

A greased shackle pin greatly reduces friction and operating temperatures while prolonging the life of the bush. XGS Greasable Shackles make the messy and time-consuming task of bush lubrication incredibly easy.



Castor correction & bushes

Low castor and inadequate bushes create undesirable driving characteristics such as vague or unresponsive steering, understeer and straight-line instability. To permanently correct this XGS have developed a range of premium quality castor correction kits and durable polyurethane bushes.



Sway bars & link pins

A sway bar, in general terms, is a bar that's mounted laterally on a vehicle's suspension and chassis to reduce body roll. The sway bar transfers movement from one side of the suspension to the other through the connection of a bar to each side of an axle by sway bar links.



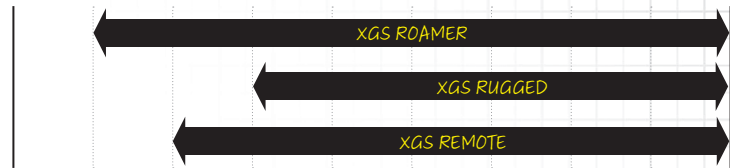


WEIGHT CAPACITY.

LIGHT LOAD

HEAVY LOAD

Shocks/struts



Coil springs



Leaf springs



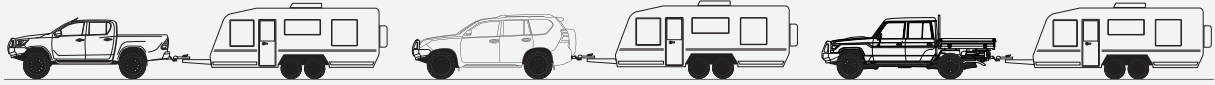
XGS 4WD SUSPENSION WILL IMPROVE YOUR LOAD CARRYING CAPACITY AND REGAIN LOST GROUND CLEARANCE FROM FITTED ACCESSORIES.

ACCESSORY WEIGHT GUIDE.

VEHICLE PROTECTION	NUDGE BAR	10 - 15KG
	OUTBACK STEEL BAR	75 - 115KG
	SIGNATURE ALLOY BAR	50 - 75KG
	SIDE BARS	15 - 20KG
	SIDE STEPS	35 - 45KG
WINCHES	REAR BAR	45 - 75KG
	TORQ WINCH 9500LB SYNTHETIC ROPE	35KG
ROOF TRAY	TORQ WINCH 9500LB STEEL CABLE	40KG
	STEEL	35 - 50KG
CANOPY	ALLOY	20 - 25KG
	TJM PREMIUM CANOPY	85KG*
ROOF TOP TENTS	AEROKLAS CANOPY	75KG*
	BOULIA	55KG
UNDERBODY GUARDS	YULARA	60KG
	FRONT	10 - 15KG
	SUMP	5 - 10KG
	TRANSMISSION	10 - 15KG
	TRANSFER	5 - 10KG
	TJM 2.5M AWNING	15KG
	TJM RECOVERY JACK	20KG
	TJM HD RECOVERY KIT	20KG
OTHER ACCESSORIES	DRIVING LIGHT 220MM	3KG
	SECOND BATTERY - N70ZZ	30KG
	TOOL BOX 1200X500X700 ALLOY (EMPTY)	30KG
	DOMETIC 80L FRIDGE (EMPTY)	30KG
	WAGON - REAR TYRE CARRIER (NO TYRE)	80KG

*Weight capacity & guide for illustration purposes only, weights are an approximation.

GVM PLUS.



Increase the load-carrying capability of your 4WD with a XGS GVM Plus upgrade.

Four-wheel drive owners often need to load up their vehicle – whether it's for work or for off-road touring – and doing so can quickly exceed a 4x4's legal Gross Vehicle Mass (GVM).

It's important to remember that the safety of a vehicle, its occupants and others on the road are compromised

when a vehicle exceeds its Original Equipment GVM, which is why overloading a 4x4 is both dangerous and illegal.

Understanding how close your 4x4 is to its GVM is crucial information for anyone with a heavily loaded vehicle. Whether you're loading up your ute

for work or preparing your 4WD for a touring adventure, you'll probably be surprised at how close (or far over) your rig is to its Original Equipment GVM before you even get in the driver's seat.

However, with a XGS GVM Plus upgrade you can carry more with confidence and comfort in any situation.



Vehicle suspension, GVM and GCM are complicated and often misunderstood subjects. To help you cut through the misinformation, we're busting the biggest suspension myths wide open.

Myth #1: 'At the end of the day, all shock absorbers are equal.'

Shock absorbers are there to control the movement of your vehicle and springs. The way they do this (and how well they do it) varies widely, depending on their materials, design and construction. Depending on your choice of mono-tube, twin-tube or remote reservoir shock absorber, your suspension system will be equipped for different kinds of performance, on and off-road. In the same way that not all shock absorbers are equal, there is no single answer to what kind of shock absorber (or complete suspension system) is right for you.

Myth #2: 'Complete suspension upgrades are never needed on new vehicles.'

In reality, OEM suspension is designed to be comfortable and effective during on-road travel and with minimal added weight inside your vehicle. By loading up your vehicle, fitting 4x4 accessories and travelling off-road, you are actively stepping outside the limited design of your rig's suspension system – even on a brand-new vehicle. Aftermarket suspension, however, is designed to perform better with the added weight of accessories and do it for longer periods, while you also have more componentry options to customise your suspension system to perfectly suit you and how you want to use your 4x4.



Myth #3: 'Lifting your vehicle with a suspension upgrade makes the vehicle less safe and susceptible to a roll-over.'

The argument that upgrading your suspension will raise your 4x4's centre of gravity is true, but that doesn't necessarily equate to a decrease in safety and an increase in the chance of a roll-over. In fact, because the spring rates and shock absorber damping rates of a quality suspension upgrade are more in tune with the dynamics of the rig (and its 4x4 accessories) that it's fitted to, a lifted vehicle with the right suspension can be far safer than a lower vehicle fitted with 4x4 accessories with standard OEM suspension.

Story by James Jackson, Images by Matt Williams.



Photo credits: James Jackson

ICONIC TRAILS SET TO TEST YOUR RIG'S SUSPENSION.

Australia. It's a land full of immense beauty, iconic destinations, epic landscapes and challenging terrain. Whether it's a corrugated desert track, a steep mountain scramble or a monsoonal plain carved by seasonal weather cycles, Australia is a plethora of awe-inspiring trails destined to amaze you.

However, with this off-roaders' paradise comes a whole host of challenges set to test your ability and your rig's set up. Namely, one of the most important 4x4 accessories for off-roading, your four-wheel drive's suspension.

Your four-wheel drive's suspension is there through it all, carrying you to glory with each and every wheel rotation. And only the best suspension systems are designed

and tested to thrive in some of the harshest conditions right across Australia.

Unlike standard suspension, which quite frankly isn't going to cut it when you're off-roading, a suspension upgrade gives you added ground clearance to overcome obstacles, superior ride and handling, as well as a higher degree of safety and improved load-carrying capability. And that's

exactly what you'll get with every XGS Suspension System.

How do we know this? Well, we decided to test our market-leading suspension systems against 5 of the toughest, suspension enduring tracks across Australia, and discovered the exact suspension requirements to easily navigate each perilous track. So, let's get this list started!

Canning Stock Route

Found in Outback Western Australia, the Canning Stock Route is the world's longest historical stock route at over 1800km long.

While not overly technical, travellers embarking on this journey through dune country should be prepared for the CSR's insistent corrugations, which can lead to agitation and put shock absorbers under immense stress. It takes about 2-3 weeks to trek this desolate journey that spans across 4 deserts, the Tanami, north and south Gibson and the Little Sandy desert, however, vehicles equipped with suspension systems designed for maximum shock durability will find this enduring trip a little more welcoming.

Suspension requirements:



**OCCUPANT
COMFORT**



**SHOCK
DURABILITY**



**STRONG
LOAD-CARRYING**

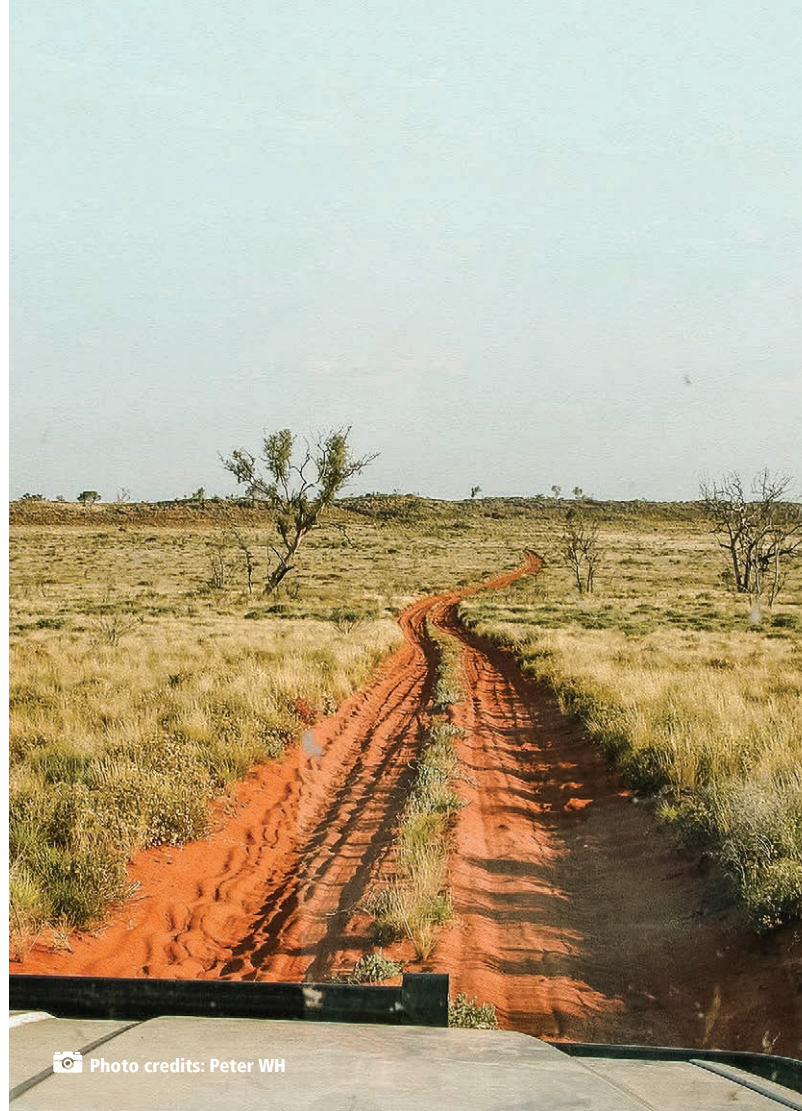


Photo credits: Peter WH



Photo credits: Summerdrought

Gunbarrel Highway

Outback Australia, there's just nothing quite like it is there. Cutting through the core of Western Australia before scything into South Australia and the Northern Territory, the Gunbarrel Highway is an outback lovers' paradise. However, despite its name, there's nothing straight forward about this highway that's full of washaways, heavy corrugations and open plains. And if you run into trouble, consider yourself in for a mighty long walk as supply stations often range almost 500km apart! Don't get caught out on this one with an inferior suspension. Go for suspension systems built for maximum shock durability and strong load-carrying capabilities – you can thank us later.

Suspension requirements:



**OCCUPANT
COMFORT**



**SHOCK
DURABILITY**



**STRONG
LOAD-CARRYING**



Photo credits: Iktoh

Mount Meharry

The Pilbara region is a breath-taking display, and there's no better place to survey this vast landscape of desolate beauty than a drive to the top of Western Australia's tallest mountain – Mount Meharry. Taking travellers roughly half a day to scale, it's not a long journey by any means (only 21km) but there's some sections here that you'd like to take nice and slow, otherwise, consider this half a day to blow out with more recoveries than you can count. Suspension systems equipped for wheel travel are a must, as sections plagued by regular washouts are unavoidable, and ground clearance goes without saying.

Suspension requirements:



OCCUPANT
COMFORT



STRONG
LOAD-CARRYING



GROUND
CLEARANCE



WHEEL
TRAVEL

Monkey Gum

Offering its conquerors some mind-blowing views at the top, the Monkey Gum Fire Trail is what we would call 'a proper 4WD track'. On a track where two turns are never the same, the Monkey Gum is an undulating mix of dirt, sharp rocks, large boulders, plunging ruts and rock steps that'll have your 4WD quivering if it's not set up right. You'll need suspension systems designed for both ground clearance and wheel travel here, and you'll be glad you have both, because the level of difficulty can go up several notches if recent weather isn't favourable and if you chose the more challenging lines.

Suspension requirements:



GROUND
CLEARANCE



VEHICLE
STABILITY



WHEEL
TRAVEL



Photo credits: Grahamec



Glasshouse Mountains

If you find yourself travelling through South East Queensland, you might hear a few locals encouraging you to check out the Glass House Mountains. However, before you do, we can safely say that the Glass House Mountains are a literal proving ground when it comes to testing your 4x4 skills and how well equipped your vehicle is.

Whether it's the wet or dry season, there's nothing easy about the tracks in the GHM, and none come more challenging than Big Red. Full of epic washouts, ruts and rock steps that can't wait to send unprepared vehicles on their side (or their back), Big Red is eagerly awaiting to play with its prey and only vehicles equipped with suspension systems built for ground clearance should even attempt this terrifying journey.

Suspension requirements:



**GROUND
CLEARANCE**



**VEHICLE
STABILITY**



TJM 4X4 EQUIPPED

RECOVERY





KINETIC ROPES.

If you're trekking off-road, chances are sooner or later you're going to get bogged – particularly if you're driving on soft terrain. With a TJM Kinetic Rope you can get yourself easily unstuck in situations where a snatch strap isn't viable.

Made from 100% nylon, the TJM Kinetic Rope is available with an 8.5T or 13T breaking strength and can purchased individually or as part of a kit that includes 21T rated shackles, strap keepers, a recovery blanket and gloves all stored in a large gear bag.

Minimum breaking strength	8,500kg	13,000kg
Length	9m	9m
Diameter	19mm	22mm
Stretch	30%	30%
Material	100% nylon	100% nylon
Reinforced eyelet	Yes	Yes

TJM KINETIC ROPES ARE MADE USING ONLY THE HIGHEST QUALITY MANUFACTURING PROCESSES AND MATERIALS, THEN INDEPENDENTLY TESTED TO ASSURE PROPER FUNCTION AND BREAKING STRENGTHS ARE MET.

REINFORCED EYELETS
ALL TJM KINETIC ROPES FEATURE REINFORCED EYELETS ON BOTH ENDS AS THIS IS NORMALLY THE AREA THAT WOULD TAKE THE MOST ABUSE.

IDENTIFIABLE COLOURS & CLEARLY LABELLED
EACH TJM RECOVERY STRAP AND KINETIC ROPE HAS ITS OWN IDENTIFIABLE COLOUR AND ON THE BACK OF EACH PROTECTIVE SLEEVE IS THE STRAP'S BREAKING STRENGTH.

NEOPRENE PROTECTIVE SLEEVES
THESE PROTECTIVE SLEEVES PROVIDE CLEAR LABELLING AND PROTECTION FOR BOTH THE KINETIC ROPE AND THE VEHICLE DURING RECOVERY.

50% MORE STRETCH*

FLOATS ON WATER.



8.5T kinetic rope recovery kit

- 1x TJM 8.5T Kinetic Rope 19mm \varnothing x 9m
- 2x Strap keepers
- 2x 21T 10mm Soft Shackle
- 1x TJM Recovery Blanket
- 1x TJM Recovery Gloves
- 1x TJM Gear Bag



13T kinetic rope recovery kit

- 1x TJM 13T Kinetic Rope 22mm \varnothing x 9m
- 2x Strap keepers
- 2x 21T 10mm Soft Shackle
- 1x TJM Recovery Blanket
- 1x TJM Recovery Gloves
- 1x TJM Gear Bag





Off-road travel brings with it the chance to get bogged in sand, mud or snow, and a TJM Kinetic Rope is a smooth and predictable recovery tool to get you unstuck. Connected to a bogged vehicle and a pulling recovery vehicle, a TJM Kinetic Rope stores energy as it stretches by up to 30%, before that energy is used to free the stuck vehicle and keep the adventure going.

RECOVERY STRAPS.

Recovery straps in all their forms are a key tool for getting unstuck when a vehicle is unable to move. TJM straps are designed to reliably perform at peak levels and, to do so, they're manufactured to the highest standards and tested extensively - allowing you to traverse difficult terrain knowing you have a backup.

Snatch straps

The TJM Snatch Strap is a vital part of any 4WD recovery kit. The combination of vehicle pull and the tension in the strap creates a 'snatching' effect that can pull a stranded vehicle free from being bogged or unable to move under its own power.

Minimum breaking strength	8,000kg	11,000kg	15,000kg
Length	9m	9m	9m
Width	60mm	75mm	100mm
Stretch	20%	20%	20%
Material	100% nylon	100% nylon	100% nylon
Reinforced eyes	Yes	Yes	Yes
Eye & seam protector	Yes	Yes	Yes



8T tree trunk protector / equaliser strap & 10T tree trunk protector

A TJM Tree Trunk Protector guards the tree you're anchoring to and your gear from any unnecessary damage.

Minimum breaking strength	8,000kg	10,000kg
Length	3m	5m
Width	75mm	75mm
Material	100% polyester	100% polyester
Reinforced eyes	Yes	Yes
Eye & seam protector	Yes	Yes



6T winch extension strap

The TJM winch extension strap is designed to be used when extra length is required for winching or a suitable anchor point is out of reach. The TJM winch extension strap is more convenient to store than extra lengths of winch cable.

Minimum breaking strength	6,000kg
Length	20m
Width	60mm
Material	100% polyester
Reinforced eyes	Yes
Eye & seam protector	Yes

RECOVERY STRAP KITS.

TJM has the ultimate range of 4x4 accessories to suit all 4WD adventurers with everything you need to tackle most situations.

Vehicle recovery is a potential part of most off-road journeys - be prepared for the unexpected with TJM 4x4 recovery gear.



Using a snatch strap and equaliser strap with a TJM bull bar's rated recovery points is the safest way to perform a snatch recovery. You can also use soft shackles instead of bow shackles to remove steel from the recovery equipment used.



TJM has a comprehensive range of recovery gear so you can build a kit to suits your needs.



8T snatch strap kit

- 1x TJM 8T Snatch Strap 60mm x 9m
- 2x Strap keepers
- 2x TJM 16mm Bow Shackles (3,250kg WLL)
- 1x TJM Recovery Gloves
- 1x TJM Gear Bag



11T snatch strap kit

- 1x TJM 11T Snatch Strap 75mm x 9m
- 2x Strap keepers
- 2x TJM 19mm Bow Shackles (4,750kg WLL)
- 1x TJM Recovery Gloves
- 1x TJM Gear Bag



Large recovery kit

- 1x TJM 8T Snatch Strap 60mm x 9m
- 1x TJM 8T Equaliser Strap 75mm x 3m (which doubles as a tree trunk protector)
- 1x TJM 6T Winch Extension Strap 60mm x 20m
- 6x Strap keepers
- 2x TJM 16mm Bow Shackles (3,250kg WLL)
- 1x TJM Recovery Gloves
- 1x TJM 10T Snatch Block
- 1x TJM Recovery Blanket
- 1x TJM Gear Bag



Heavy-duty recovery kit

- 1x TJM 11T Snatch Strap 75mm x 9m
- 1x TJM 10T Equaliser Strap 75mm x 5m
- 1x TJM 6T Winch Extension Strap 60mm x 20m
- 6x Strap keepers
- 2x TJM 19mm Bow Shackles (4,750kg WLL)
- 2x TJM 16mm Bow Shackles (3,250kg WLL)
- 1x TJM Recovery Gloves
- 1x TJM 10T Snatch Block
- 1x TJM Recovery Blanket
- 1x TJM Large Gear Bag



RECOVERY BOARD.

Make a new path with TJM Tred HD Recovery Boards. TJM Tred HD Recovery Boards simplify vehicle recovery in sand, mud or snow by giving your 4x4's tyres reliable traction in otherwise traction-less situations.

PROGRESSIVE VARIABLE TOOTH DESIGN
BASED ON RESEARCH OF 100S OF TREAD PATTERNS.

DEDICATED ENTRY AND EXIT POINTS
BETTER TYRE PROFILE GRIP.

TRED-LINK
THE NEVER ENDING RECOVERY BOARD SYSTEM.

SIDE-LOCK™
PATENTED GRIP PROFILE FOR ULTIMATE TYRE TRACTION.

MOUNTING OPTIONS
MOUNT IT YOUR WAY.

CONVEX PROFILE
MOMENTUM ROLLER

CONCAVE RAMP
BETTER SURFACE CONTACT.

LIFETIME WARRANTY
LIFETIME WARRANTY.

IMPROVED SHOVEL & HANDLES.

MADE IN AUSTRALIA
USED WORLDWIDE.

LOW PROFILE
BETTER STACKING.

ALL SEASON
AMBIENT -15° TO 70°C
(5°-158°F)

GREATER STRENGTH
VEHICLES UP TO
4.5 TONNE (9,900LBS)

LIGHTWEIGHT
APPROX. 3.5KG /
7.7LBS EACH

GREATER CONTACT
220MM TRACTION
WIDTH (8 2/3")

ALL TERRAIN
SAND, MUD
OR SNOW

IMPROVED FLEX
FOR MAXIMUM
PERFORMANCE

PREMIUM GLOVES.

TJM Premium Gloves are professional grade recovery gloves. These gloves ensure safe and controlled winching, using wire or synthetic winch ropes.



RECOVERY JACK.

TJM's recovery jack is a versatile piece of equipment that provides lifting assistance to aid vehicle recovery. This jack fits directly into our unique bull bar T-slot recovery point which has been extensively tested and can be found on many of our steel bull bars.



JACK BASE.

This TJM recovery jack base gives your recovery jack a larger, more stable footprint for safer lifting.



RECOVERY HITCHES.

If you're planning on going off-road, it is essential that your vehicle have at least one rear recovery point. TJM's range of recovery hitches are the perfect solution.

Specifically designed to fit into leading manufacturer tow hitches and TJM rear step tow bars, and able to be turned for both horizontal or vertical shackle alignment (to avoid shackle binding) our hitches are built to go the distance.



Steel
Recovery Hitch

Alloy
Recovery Hitch

Extended Alloy
Recovery Hitch



A TJM soft shackle provides a simpler and safer means of vehicle recovery.



A TJM bow shackle can be used with a TJM Steel Recovery Hitch.



SOFT SHACKLES.

The TJM 21T Soft Shackle boasts an incredible minimum breaking strength of 21,000kg, allowing you to recover your 4x4 with complete confidence in any situation.



16 & 19MM SHACKLES.

TJM bow shackles form a key link in joining equipment for vehicle recovery situations. Our shackles are forged from steel, galvanised, then powdercoat bright yellow for clear visibility.



RECOVERY BLANKET.

The TJM Recovery Blanket can help tame a strap or winch cable in the event of breakage and reduce the chance of whip-like recoil. This should form an essential part of your recovery kit.



TYRE REPAIR KIT.

An essential accessory for off-road travellers, the TJM Tyre Repair Kit is an easy solution for temporarily fixing tyre punctures while you're off the beaten track.



Using a Tree Trunk Protector, Bow Shackle and a Snatch Block from the TJM Large Recovery Kit in a double-line winch recovery.



SNATCH BLOCK.

The TJM 10T Snatch Block can effectively double the capacity of your recovery winch. They are also useful in recovery situations where the winch anchor point is not in a direct line of the vehicle's winching direction. The TJM snatch block is complete with greasable nipple for smooth, trouble-free operation, while it has a rated working load of 10,000kg.



RECOVERY RING.

Getting yourself unstuck in extreme recovery situations has never been easier with the TJM Recovery Ring. Despite weighing less than 1kg, this recovery ring offers an impressive working load limit of 10T thanks to its precision engineered 6061 T6 aluminium construction, and can halve the recovery load your winch experiences during a winch recovery.





TJM 4X4 EQUIPPED

ELECTRIC WINCHES

Venture further afield and explore Australia's most exciting 4WD destinations with a TJM Torq Winch.

Whether you're travelling on your own or in a group, a winch is a powerful recovery tool that makes extracting vehicles simple and safe. Plus, because local tracks and far-off places both have the potential to get 4x4s stuck, a winch is useful to have on either a weekend away or on a solo Outback adventure.

TJM Torq winches are designed and tested in Australia to ensure they're ready to perform in even the harshest conditions, while their finely tuned balance of power and line speed will help you get back on track faster. And, alongside various sizes and cable options available, getting out of trouble is now even easier with wired or wireless remote control operation. Meanwhile, the IP67 wireless transceiver now comes integrated in our re-designed compact control box – with TJM, there's a Torq Winch to suit every adventurer.



12,000lb and 9,500lb Torq winch
with yellow synthetic rope &
alloy hawse fairlead.



12,000lb and 9,500lb Torq winch
with black synthetic rope &
alloy hawse fairlead.



9,500lb Torq winch
with steel cable &
steel hawse fairlead.



4,000lb Torq winch
with yellow synthetic cable &
alloy hawse fairlead.

TJM Torq winches are available in two capacities: 9,500lb (4,309kg) and 12,000lb (5,443kg). Both feature a high-performance series-wound motor that delivers fast line speeds for quick and reliable recoveries, as well as a three-stage planetary gear train. Torq winches also boast hardened drums that increase their longevity and guard against poor performance, or even winch failure, at critical moments.

TJM 9,500lb Torq winches are available in aircraft steel cable with a roller fairlead or synthetic rope with aluminium hawse fairlead - both with a 150:1 gear ratio - giving you choice depending on the terrain you want to conquer. Meanwhile, the 12,000lb Torq Winch comes with 9.5mm² synthetic rope and a 210:1 gear ratio.





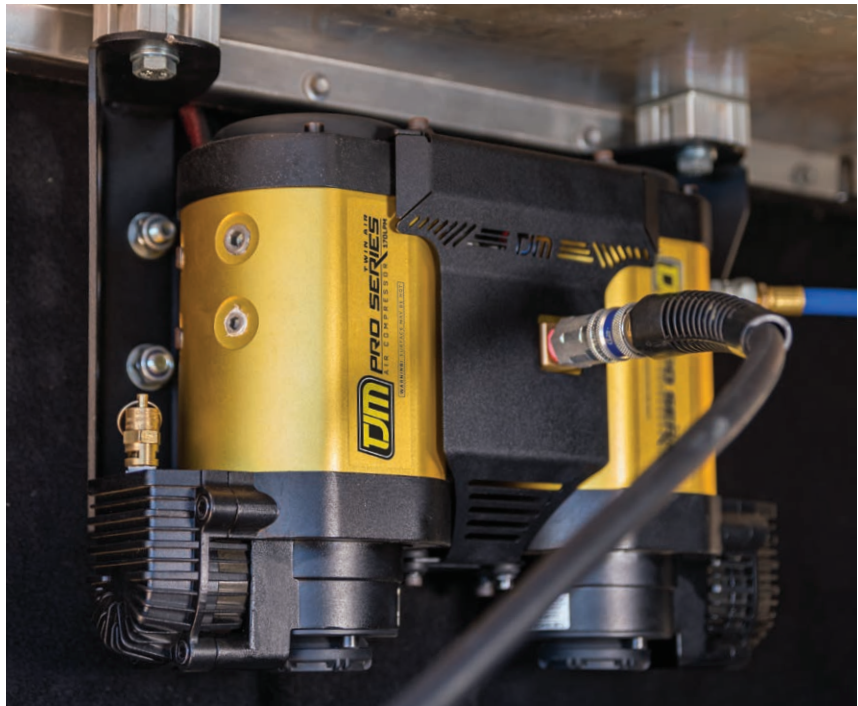
TJM 4X4 EQUIPPED

AIR COMPRESSORS & TYRE ACCESSORIES

Often essential and always useful, air compressors are one of the most used tools in an off-roader's arsenal.

Lowering and raising tyre pressures are common techniques that make tackling diverse off-road terrains easier and safer. For this reason alone, air compressors are a must-have accessory, however they can also serve a number of other purposes – making them a highly functional bit of kit.

TJM air compressors, which come in a variety of sizes and forms, are designed and tested in Australia to perform at the highest level for extended periods of time. Plus, our tyre accessory range is designed to perfectly complement your choice of air compressor, giving you everything you need to roam far and wide on four wheels.



PRO SERIES SINGLE & TWIN.

The TJM Pro Series compressors have been designed with a high emphasis on integrated functionality, higher flow rates and increased durability, making them perfect for harsh vehicle-mounted applications.



**INCREDIBLE
100% DUTY CYCLE**



**CAN OPERATE
PRO LOCKERS**



**MOISTURE &
DUST RATING**



**DESIGNED & ENGINEERED
IN AUSTRALIA**



**3 YEAR
WARRANTY**



**AUSTRALIA WIDE
SUPPORT**

Incredible performance every time

The second you encounter soft terrain, having a reliable and effective compressor to pressurise your tyres at a moment's notice is one of the most powerful tools you can have. Our TJM Pro Series Air Compressors provide you with just that. Available in both a Single and Twin air compressor design, boasting 86LPM and 170LPM flow rate respectively, the Pro Series compressor range is built for lightning fast inflation thanks to impeccable internal componentry and a stellar design. Built for peak performance, the clever mounting applications, multiple inflation and auxiliary points provide exceptional utility.



**HIGHER FLOW RATES
FOR FASTER TYRE INFLATION.**
48MM CYLINDER BORE,
FOR HIGHER FLOW-RATE
PERFORMANCE..



**INTEGRATED AIR TANK
(PATENT PENDING)**
INTEGRATED DESIGN ALLOWS
FOR SPACE TO BE OPTIMISED
IN VEHICLE-MOUNTED
APPLICATIONS.



INCREASED PERFORMANCE
100% DUTY CYCLE, FOR
LONGER OPERATION TIME.
TEFLON-IMPREGNATED PISTON
SEAL, FOR LONGER-LASTING
PERFORMANCE.



**HEAVY-DUTY
INTERNAL COMPONENTRY**
OVERSIZED INTERNALS FOR
OPTIMAL PERFORMANCE AND
HARD ANODISED CYLINDER
BORE, FOR REDUCED FRICTION
AND LONGEVITY.



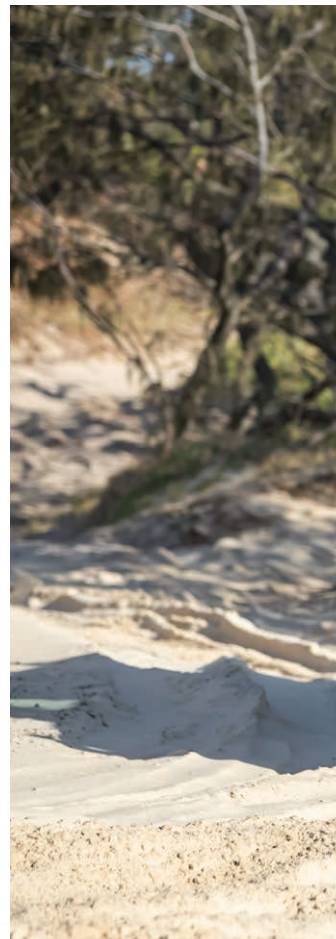
**MULTI-DIRECTIONAL
MOUNTING OPTIONS**
SINGLE COMPRESSOR
IS EQUIPPED WITH FIVE
DIFFERENT MOUNTING OPTIONS,
WHILE THE TWIN COMPRESSOR
CAN BE MOUNTED VERTICALLY
OR HORIZONTALLY.



**CONVECTIONAL
COOLING SYSTEM**
HEAT IS DRAWN AWAY FROM THE
MOTOR AND AIR TANK, INCREASING
OPERATION TIME AND HELPS TO
PREVENT AIRLINE HOSE FAILURES.
BUILT-IN THERMAL MOTOR
PROTECTION TO PREVENT
MOTOR DAMAGE IN EXTREME
TEMPERATURES.



**INCREASED STRENGTH
& LONGEVITY**
EXTERIOR IS CONSTRUCTED
FROM A COMBINATION OF CAST
AND EXTRUDED ALUMINIUM,
FOR A DURABLE AND
HEAVY-DUTY FINISH.
IP54 RATING FOR PROTECTION
AGAINST MOISTURE AND
DUST INGRESS.





Tough and functional

Take comfort knowing our Pro Series compressor range has been designed and engineered in Australia, and tested against some of the harshest conditions this land has to offer. Across both the Single and Twin versions, The TJM Pro Series Air Compressor features an advanced convection cooling system designed to cycle heat away from the motor, while the combination of cast and extruded aluminium, an anodised cylinder bore and Teflon-infused piston seal offer incredible endurance and ensures your Pro Series Air Compressor delivers peak performance and longevity in all conditions.



AIR TANK.

You've asked for it and here it is. The final piece of the puzzle for our entire Pro Series compressor range, the TJM 2.5L and 5L Air Tank. When partnered with TJM Pro Series Air Compressors, the TJM Air Tank delivers a consistent high volume air output of a rated maximum working pressure of 150psi. With this huge working pressure offering, typical applications such as tyre inflation can be expanded to operating air powered tools, activating air actuated differential lockers and so much more.



COMPLIANT
WITH AUSTRALIA
STANDARD
AS2971-2007

FULLY ADJUSTABLE FEET

TANK FEET CAN BE MOVED ANYWHERE ALONG THE EXTRUSION PROVIDING FLEXIBILITY IN VEHICLE-MOUNTED APPLICATIONS.



INCREASED STRENGTH
& LONGEVITY
ANODISED ALUMINIUM
EXTRUDED BODY AND
DIECAST ALLOY END CAPS
OFFER EXCEPTIONAL
DURABILITY AND
HIGH-END FINISH.



COMPACT DESIGN
DESIGNED TO FIT
UNDERNEATH
DRAWER SYSTEM
WINGS.



MULTI-FIT DESIGN
CLEVER DESIGN ALLOWS
THE TANK TO BE MOUNTED
AT ALMOST ANY DIRECTION
AND ANGLE.



BUILT TO THRIVE
DESIGNED TO SUIT
HARSH OUTBACK
CONDITIONS.



MULTIPLE PORT
CONNECTIONS
INLETS, OUTLETS, DIFF
LOCKER ACTUATORS AND
MORE.



PORTABLE COMPRESSOR.

Designed and engineered for tough Australian conditions, the TJM Portable Air Compressor makes tyre pressure adjustment easy. It comes complete with a 7.2m quick connect rubber hose, gauge and soft carry bag for damage-free packing and backed by a 5-year Australia-wide warranty. Add an optional TJM Tyre Repair Kit for hassle-free puncture repairs on the road.



72
72 LITRES
PER MINUTE

5YR
5 YEAR
WARRANTY


AUSTRALIA WIDE
SUPPORT





TYRES & TERRAIN EXPLAINED.

Lower tyre pressures can give you a traction advantage on soft and shifting surfaces that don't allow your tyres to grip it effectively.

Your tyres are the (literal) first point of contact with any terrain your 4x4 is travelling over, which makes them incredibly important for driver and occupant comfort, avoiding recovery situations and overcoming obstacles.

Traction is a big factor in each of these examples, because without traction you can't have forward motion. When you can achieve optimum tyre traction, you give yourself the best chance of moving forward in the easiest and safest way.

Sealed roads give your tyres a predictable surface to achieve traction, but off-road terrain can make achieving traction difficult. However, there is a common technique that will help you gain traction in a wide range of conditions: lowering your tyre pressures.

Lower tyre pressures can give you a traction advantage on soft and shifting surfaces that don't allow your tyres to grip it effectively. By lowering your tyre pressures, you are elongating your tyres' footprint, giving more surface contact to achieve traction and spreading the weight of your vehicle across a larger area.

Terrains where lower pressures will make life easier include sand – the most common example – as well as mud and loose, rocky tracks. Plus, in addition to avoiding recovery situations, lowering your tyre pressures on certain off-road trips will give you a softer ride and can even help to avoid tyre punctures.

It's also essential to remember that the more traction you have, the less likely you are to spin wheels and try to use speed and added momentum to make it



through challenging tracks – allowing you to tread lightly and better preserve the track you're driving on for the next traveller.

Finally, after your adventure is done and you're back to the blacktop, you should always reinflate your tyres to road driving pressures.

Story by James Jackson.



Top: TJM Tyre Deflator makes quick work of lowering your tyre's pressure. Bottom: TJM Tyre Inflation Kit makes getting the right tyre pressure easy.



AIRLINE KIT.

Designed to be the perfect partner to a TJM air compressor, the TJM Airline Kit contains everything you need to cover all your inflation needs. Inside the handy carry bag is a 6m heat-resistant air hose with one-touch fittings, as well as an air blower attachment and a complete set of blower nozzle attachments that suit all kinds of purposes.



TYRE DEFLATOR.

Dropping tyre pressures is an easy way to gain traction off-road and make your journey simpler. The TJM Digital Tyre Deflator allows you to quickly and accurately adjust your tyre pressures with a digital display read-out and multiple unit of measurement options. Protected by an easy-to-grip rubber cover and crowned by a brass screw-on chuck, the TJM Digital Tyre Deflator is an essential tool for off-road adventure.



INFLATION KIT.

Designed to make tyre inflation quicker and simpler, the TJM Tyre Inflation Kit features a digital gauge, a long 600mm rubber hose and durable fittings. Getting the right tyre pressure is easy thanks to a backlit digital display with multiple unit of measurement options, while a broad inflator button and in-built bleed deflator make using the TJM Tyre Inflation Kit simple.

TJM 4x4 EQUIPPED

CAMPING





ROOF TOP TENTS.

Getting a good night's sleep in the great outdoors is easy with a roof top tent. Made to give you space, comfort and protection from the elements (and wildlife), a quality roof top tent delivers supreme levels of relaxation at any campsite.

TJM roof top tents have been designed for ultimate comfort and maximum durability. Made from high-quality poly-cotton ripstop fabric, TJM roof top tents are available in three varieties: the Soft Shell, Yulara and the Boulia. All elements of the tents are double stitched for exceptional longevity and waterproofing, while they also feature large, fully screened windows and doors for welcome ventilation. Boasting a high-density foam mattress, a pull-out veranda and optional zip-on annexes, the TJM Soft Shell, TJM Yulara and TJM Boulia Roof Top Tents guarantee comfort at any campsite.



SOFT SHELL ROOF TOP TENT.

Looking for a quick simple set up for your next outdoor adventure? Up out of harm's way and enjoying the creature comforts of home with a large and comfy bed base and mattress, try the new TJM Soft Shell Roof Top Tent.

With several large windows and meshed screens there is great airflow and ventilation. Enjoy the night sky through the stargazing window and all the extra features built into our new soft shell roof top tent.

- Includes sheltered canopy over tent entry
- Soft handle to assist with easy opening and closing
- 320 x 160 x 130cm open size
- 100% waterproof 320GSM ripstop poly-cotton canvas
- Strong and lightweight aluminium poles, base and black telescopic ladder
- Queen size quilted mattress with removable cover



SOFT SHELL ANNEXE.

Need that extra sleeping space for the kids or added storage to keep your gear dry and cool - add a TJM annexe to your soft shell roof top tent set up. Easy to install via the sail track and fully zippered to the base of the tent allowing a swift setup.

- Easily fits via sail track & zip on TJM Soft Shell Roof Top Tent
- Front door & side windows all come with eyelets so they can be converted to awnings for additional shade & protection when tent poles are fitted
- Zippered mesh screen on front door
- 2x Internal storage pockets
- 2x Cable access holes



CLEAR BAG.

Need that somewhere special to hang a map or for the kids devices? Then the TJM Clear Storage Bag suited to the soft shell roof top tent will keep your goods safe and sound without any interference.



SHOE BAG.

Keep those bugs out of your shoes and high and dry in the TJM Shoe Bag. Complete with closing lid that can be fitted into the sail track on your roof top or awning. This shoe bag makes a great addition to your accessories.



STORAGE ORGANISER.

Need a tidy campsite? Add a handy storage organiser to keep all your goods and chattels off the ground and high and dry

YULARA ROOF TOP TENT.

TJM Yulara Roof Top Tent will guarantee comfort at any campsite.

- Includes sheltered canopy over tent entry
- 320 x 140 x 130cm open size
(120 x 140 x 28cm closed)
- 100% waterproof ripstop poly-cotton canvas
- Strong and lightweight aluminium poles, base and ladder
- Comfortable 240 x 120cm mattress



BOULIA ROOF TOP TENT.

The Boulia features fully screened windows and doors, and a pull-out veranda. To get even more space add an optional zip-on annex.

- 240 x 140 x 130cm open size
(120 x 140 x 28cm closed)
- 100% waterproof ripstop poly-cotton canvas
- Strong and lightweight aluminium poles, base and ladder
- Comfortable 240 x 120cm mattress



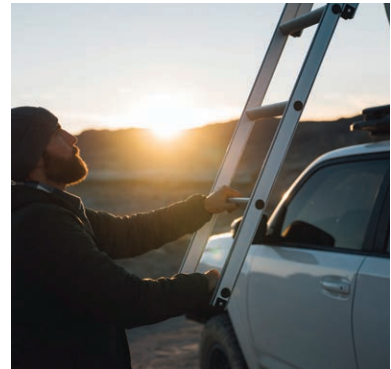
YULARA ANNEXE.

The optional Yulara annex with floor provides additional privacy, space and comfort with enough room to fit two stretcher beds without obstructing access to the rooftop sleeping area. Windows and doors on all sides provides maximum ventilation.



BOULIA ANNEXE.

TJM Boulia roof top tent annex with no floor features windows and doors on all sides to provide maximum ventilation.



LADDER EXTENSION.

A ladder extension for a taller vehicle where you may need to extend the ladder leading up to your Roof Top Tent.



DOUBLE SWAG.

Spacious enough for two adults and crafted from 400gsm ripstop canvas (with a raised & reinforced 500gsm PVC bucket floor), the TJM Double Swag is designed with Australia's harsh climate in mind. Setting up camp wherever, whenever, couldn't be easier.

However, it's not just strong - but comfortable too! Coming with a high-density foam mattress (complete with a removable and washable cover), a built-in awning, entrance mat, mesh covered doors and windows, and inner storage (to keep your essentials within arms reach) you'll be able to rest in clean, well-ventilated, bug-free comfort wherever you go on your next camping adventure.



WATERPROOF GROUND MAT.

Don't be caught without your TJM Waterproof Ground Mat. A handy inclusion to every campers kit - keeps out the damp, blocks out the wind - whatever you need it to be.



ANTI CONDENSATION MAT.

The secret to preventing condensation in your swag is airflow. Fitting an anti condensation mat under your mattress will increase the air circulation and prevent build up of condensation whilst increasing your comfort.

AWNINGS.

A TJM awning gives you instant comfort and protection from the elements wherever you pull up. Swift to set up in under 30 seconds and simple to pack away, TJM awnings are available in three sizes to perfectly suit your travel style: 1.4m x 2m (W x L), 2m x 2.5M (W x L) and 2.5m x 2.5m (W x L). The two larger variants include a seamlessly integrated LED light strip to evenly illuminate any campsite, giving you a complete day-and-night awning solution for any adventure.





Seriously durable

TJM awnings are made from hardy 280gsm ripstop poly-cotton canvas that's built to last. Each awning's legs are constructed from black powder-coated aluminium to keep them standing in all conditions, while they fold away neatly in individual pole channels to make set up and pack up simple.



Form and function

You can transform your awning into a complete camping solution with the help of some simple awning accessories. TJM awnings can be used in conjunction with TJM awning walls to give you added privacy and protection, while our awning organiser allows you to quickly access your gear and add a touch of home to any campsite.



The TJM Awning Front Wall attaches to the awning along a track to effectively protect you from the elements. Made from hardy 280gsm ripstop poly-cotton canvas that's built to last, the TJM Awning Front Wall delivers unbeatable sun protection thanks to a UV rating of UPF50+, while it also serves as a windbreak and gives you additional privacy wherever you pull up. To help with drainage when it rains, the wall also features a handy water column.

AWNING ORGANISER.

Add extra storage space and make accessing the essentials easy with a TJM Awning Organiser.

Organiser easily slides into the TJM Awning track



CAMP CHAIRS.

Camping chairs are an essential part of any good campsite, but they can also be used for a day at the beach, a picnic in the park and so much more. To give TJM customers the perfect camp chair for their needs, we've got a new range of camp chairs to suit every situation and every traveller.



Premium Director's chair

Boasting a lightweight and durable aluminium frame that's combined with DuraDore® 3D mesh and nylon mesh, the TJM Premium Director's Chair is a compact and comfortable seating option for relaxing in the great outdoors. It comes with removable armrests for added comfort, PVC carry handles for transportation and a high weight capacity of 120kg.



Director's chair

The TJM Director's Chair comes with a clever side table and in-built cup holder for added convenience, while its removable armrest covers add an extra touch of comfort. Simple to unfold and pack away, the TJM Director's chair comes with a 120kg weight capacity, as well as a carry bag that makes it easy to protect and transport.



High Back chair

The TJM High Back Chair adds an extra level of comfort to any campsite. Featuring a padded backrest to match its supportive high back, the TJM High Back Chair has a durable steel and aluminium frame that's complemented by 600D polyester with a PVC coating. A cup holder and rear and under-seat pockets give you added storage that's easy to access.

The TJM High Back chair comes with a 120kg weight capacity, as well as a carry bag.





Camping Table

The TJM Camp Table provides the perfect outdoor dining solution to any campsite. Featuring a space-saving, foldable design for easy setup and effortless cab storage, telescopic legs that can be individually adjusted for uneven terrain, a hardy aluminium design with a load rating of 30kg and a durable polyester carry bag making transportation a breeze.



Folding stool & table

Compact and multi-functional, the TJM Folding Stool & Table is a useful addition to any campsite, picnic or roadside stop. Boasting a tough construction that includes DuraDore® 3D mesh and nylon mesh, the tabletop has an excellent 30kg weight capacity and the stool has a 100kg weight capacity. Meanwhile, its compact size makes it easy to transport and setup in small spaces.

CAMP LIGHTS.

Taking comfort to the next level and create an unmatched atmosphere with TJM's camp lights range. With countless fixed and portable lighting options available, turn any trip away into an experience you'll never forget.



Camp light kit

Magnetic and easy to power, the TJM 4 Bar Camp Light Kit makes a welcome addition to any campsite. Equipped with individual diffusers allowing you to choose between three different light modes, they also feature a high durable IP68 rated construction for optimal weather protection, two light switches for complete convenience and a compact zip-up carry bag for effortless storage.





Compact work light

Whether it's for home renos without power, late night sessions in the workshop or for the campsite, the TJM Compact Work Light is the perfect, non-invasive solution. Offering a lighting area of 18m², this LED work light features 3 light modes, a welcome IP43 waterproof design, multiple mounting options, a rechargeable lithium battery and a battery level indicator on the front.



Torch

Whether you're bush walking or getting an early start to the day, light the way with the TJM Torch. It's compact, lightweight, impact resistant and water resistant design is built to withstand those rough moments in life. Backed by up to 8 hours of run time and a huge beam distance 240m, it's sure to be at the top of anyone's camping checklist.



Headlamp

When the sun goes down in the bush, you can hardly see a thing in front of you. However, with a TJM Headlamp in tow - now that's a different story altogether. This novel headlamp features an enduring elastic headband, in-built motion sensors, multiple light modes, a rechargeable lithium battery and a USB charging port for all your portable devices.



Camping lantern

Featuring an impressive 500 lumen output in a 360° beam angle, a unique 3-in-1 design (with two detachable in-built torches) and a novel compass on top, the TJM Camping Lantern is just what your camping arsenal has been missing.

FIRE PIT.

For the avid 4WDer, an exciting new addition to any campers needs. The TJM Fire Pit, manufactured from 3mm Corten steel and featuring a stainless grill with large heating area, hand hole cut-outs for easy assembly/disassembly and comes conveniently packed in a ripstop canvas carry bag.



OUTDOOR SUMMER COLLECTION.

Staying cool, calm and collected at the beach, around the campsite or during long drives to that next destination on your bucket list has never been easier with the TJM Outdoor Summer Collection.

All of our products, ranging from the wide brim or bucket hats to travel bottles, tumblers, and even the TJM Umbrella, boast the exceptional quality and craftsmanship that TJM is known for. These items are not only built to last, but they also feature striking TJM branding, ensuring that you'll make a statement wherever you go.



Bucket hat

The TJM Bucket Hat is the perfect lightweight headgear option for any outdoors situation you might find yourself in. Its 100% cotton is naturally quick drying, providing optimal breathability to keep you cool.



Straw hat

Stylish and sun smart, the TJM Straw Hat truly is the best of both worlds. Made from 100% straw construction, this straw hat is available in two sizes and features a cotton lined wide brim for added support and UV protection.



Travel bottle

Keep your favourite drinks at the ideal temperature with the TJM Travel Bottle. Featuring a clever one-touch temperature display, a stainless steel construction, and double-wall insulation (keep drinks warm for up to 8 hours or cold for up to 12) - the TJM Travel Bottle is built for adventure.



Travel tumbler

Embark on any adventure with your favourite drink in hand thanks to the TJM Travel Tumbler. Featuring a spill-proof capped lid (with a built-in straw opening), and a double-walled stainless steel construction (warm for up to 8 hours or cold for up to 12) - you'll be splash-free no matter how bumpy the road gets.



Umbrella

Don't ever be caught out by surprise rain clouds again. With it's 135cm diameter double canopy, 190T Pongee fabric and a welcome anti-inversion feature (preventing your umbrella from being blown inside out), the TJM Umbrella will keep you dry no matter the weather.



HOW TO TAKE THE PAIN OUT OF TRIP PLANNING.

Don't let the painful task of trip planning get in the way of actually getting out of your driveway. Here are some straight-forward tips that make it easy to plan less and explore more.



1 Commit to a date. By picking a date straight away, you're saying that you take your own personal relaxation and fulfilment seriously. Just because off-roading and camping are leisure activities doesn't mean they happen on their own, so committing to a date makes your trip non-negotiable and allows you to work backwards.

2 Start with your highlights. Whether you're planning an overnighter or a month-long epic, it's easy to get lost in the details and forget to prioritise the things you want to see and do most. Write down your 'must-haves' and get whoever else is going involved, then build the rest of the journey around achieving those big-ticket items.

3 Put a price on it. Happiness has no price tag but finding it often does. By accounting for accommodation, any new or replacement gear you need as well as fuel and food, you get an idea of what you're in for; plus, it's a natural way to start thinking about the trip on a more granular level, ensuring you don't miss a trick in the planning phase.

4 Book it in. As well as camping permits, plenty of places throughout Australia require permits to travel through them. Check the places you're heading to and make sure you've got all your bases covered. This will give you peace of mind and remove the possibility of last-minute scrambles or permits not getting approved in time.

SHOVELS.

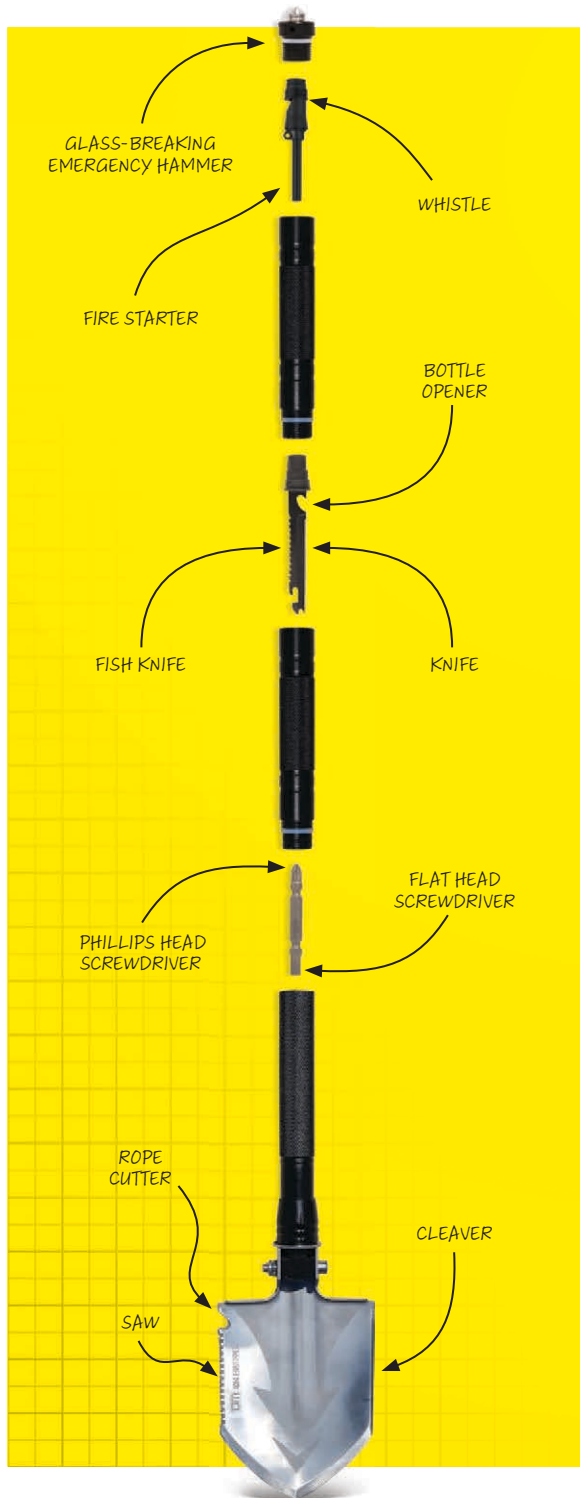
Whether you're camping for the weekend, heading off-road for the day or touring long-term, a shovel is an incredibly useful bit of kit. The TJM shovel range includes three different shovel variants, meaning there's a perfect shovel for every kind of traveller.



1500mm long-handled shovel

A sturdy tool for all kinds of applications. Its 1500mm length gives users excellent leverage, while its rubber grip is incredibly comfortable. A bonus shovel head case is included to make storage safe and simple.





Multi-Tool shovel

Highly compact and incredibly functional, the TJM Multi-Tool Shovel is designed to help you survive and thrive in the outdoors. Its stainless steel head features a rope cutter and saw on one side and a cleaver on the other, while at the end of the handle is a glass-breaking emergency hammer. Stowed away within the shovel's handle extensions are a mountable fish knife and blade, bottle opener, flat and Phillips head screwdriver, emergency whistle and magnesium rod flint for lighting fires in a pinch. Thanks to its stainless steel head and knurled aluminium alloy handle, the TJM Multi-Tool Shovel is highly durable, while the entire shovel can be deconstructed and stored in a protective pouch.



Folding shovel

The TJM Folding Shovel is a simple tool that's great for digging a fire pit, cutting up small branches or cracking a coldie. The shovel head is made from tough, durable carbon steel that's finished in a smooth black powder coat. The moulded polypropylene handle is strong and comfortable to use. When its job is done, the TJM Folding Shovel packs away neatly in the included handy carry bag.

TJM 4X4 EQUIPPED

CANOPIES





TJM PREMIUM CANOPY.



Add intuitive features and easy-access storage to your 4x4 with a TJM Premium Canopy

The TJM Premium Canopy uses clever design and intuitive features to seamlessly integrate with your 4x4. To make vehicle access simple and enhance security, the TJM Premium Canopy features full central locking. A rear spoiler adds a high-end aesthetic and includes an LED brake light for superior safety on the roads, below which is a large rear window with in-built demister. The TJM Premium Canopy even has self-lifting side windows – activated by hidden push buttons on either side of the canopy – giving you a canopy that's designed to work the way you need it to.





First-class construction

To ensure your canopy lasts as long as your vehicle, the TJM Premium Canopy has been designed and manufactured to the highest standards. Constructed from highly durable fibreglass, the TJM Premium Canopy is crowned by tinted and tempered glass windows that add security and UV protection to what's inside your vehicle. Even better, large side and rear windows make accessing the inside of your canopy simple, which is felt-lined to add a high-end finish to your canopy's interior.



*2 year on shell, 1 year on componentry. Excludes glass.

Why fit a canopy?

Storage. Canopies allow you to store more kinds of cargo with less hassle, which is particularly useful for travellers. You can transport items without having to secure them in place or worry about covering them over.

Security. Canopies are lockable and keep your cargo out of sight, allowing you to keep everything in them safe and secure.

Protection. Canopies are designed to protect your cargo from damage and inclement weather, which also applies to dirt, sand, water and more when you head off-road.



AEROKLAS STYLISH & STYLISH PLUS CANOPY.

Twin Skin construction

Elevate your 4x4's storage potential and overall aesthetic with an Aeroklas Stylish Canopy. The Aeroklas Stylish Canopy is manufactured using Aeroklas' innovative Twin Skin construction method. Made from an inner and outer shell of ABS that are moulded together, Aeroklas Stylish canopies offer incredible impact resistance. Each shell is thermoformed from a single piece of ABS without joins or weak areas, giving you a consistently strong canopy that's built for longevity.

Exceptional looks

Every Aeroklas Stylish Canopy is designed to aesthetically enhance your 4x4. After thermoforming, the canopy's outer shell is robotically painted to OEM standards to give each Aeroklas Stylish Canopy a premium exterior finish. This is complemented by tinted and tempered glass windows through which you can access the canopy interior, which features a luxury textured ABS interior for an elegant finish inside and out.

1 AND ONLY
ABS DOUBLE
SHELL CANOPY

OE QUALITY
COLOUR CODING

NO-DRILL
INSTALLATION

4YR
4 YEAR
WARRANTY*

**4 year on shell, 1 year on componentry. Excludes glass.*



Above: Aeroklas Stylish canopies are robotically painted to ensure accurate colouration and product longevity.

Right: Made from inner and outer ABS thermoformed shells, that are then moulded together to create a high-quality OEM premium finish that not only looks great but is incredibly strong.





Elevate your storage potential and overall look with an Aeroklas Stylish Canopy

Both the inner and outer shells are moulded together with no joins or weak areas to bring you twice the strength and durability than a single skinned canopy, featuring a higher impact resistance and ability to reshape after impact.



TINTED 5MM TEMPERED GLASS IS USED FOR ENHANCED DURABILITY AND SAFETY AND ARE KEY LOCKABLE FOR EXTRA SECURITY.



ROOF RACK COMPATIBLE AND RATED TO 80KG.
*ROOF RACKS AVAILABLE SEPARATELY.



PUSH-BUTTON SIDE & REAR ACCESS*
EXTREMELY CONVENIENT SELF-LIFTING SIDE AND REAR WINDOWS ACTIVATED BY A DISCREET PUSH-BUTTON. BUTTONS ARE DISABLED WHEN VEHICLE IS LOCKED FOR ADDED SECURITY.

*PUSH BUTTON REAR ACCESS AVAILABLE ON SELECTED VEHICLES.



CENTRAL LOCKING
THE REAR DOOR LOCKS AND UNLOCKS THROUGH THE VEHICLE'S CENTRAL LOCKING SYSTEM.

AEROKLAS

Built to last

The smooth finished outer shell is robotically painted to OEM standards and pass OEM testing requirements for paint finishes. Aeroklas Stylish canopies offer an attractive textured finish with no external wiring or bracketry, while the canopy shells are made from 100% recyclable ABS.

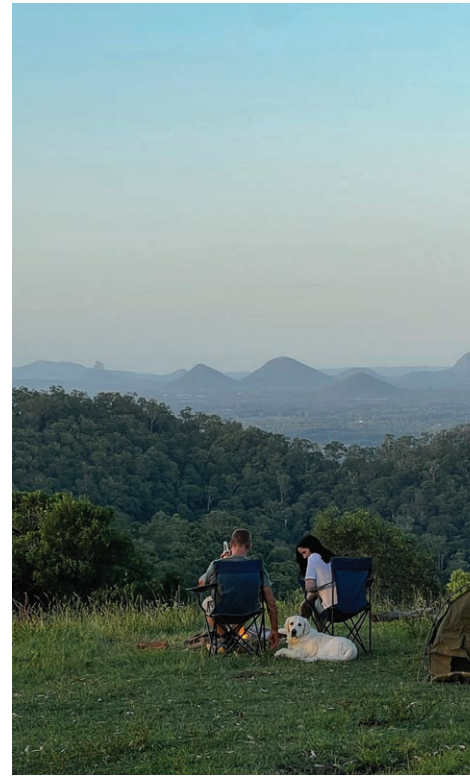
AEROKLAS INJECTA CANOPY.

Highest load carrying capacity

With the Aeroklas Injecta Canopy, form and function combine to ensure your 4x4 can haul more up top than ever before. Crafted from a single piece of ABS, potentially weaker areas such as joins are effectively non-existent, while the Reaction Injection Moulding (RIM) increases the dynamic load rating to a market-leading 120kg (350kg static) – empowering your 4x4 to carry more. And the dynamic design doesn't stop there! The Aeroklas Injecta Canopy features a reimagined raised roof profile that makes lugging around taller and bulkier items a breeze, and puts an end to proverbial canopy Tetris.

Built to last

The Aeroklas Injecta Canopy has been designed and manufactured to the highest quality and standards, to ensure it goes the distance and lasts as long as your vehicle. Each canopy undergoes a rigorous amount of testing before it's fitted onto your vehicle, to certify that you're getting nothing but the best injecta canopy on the market. That's why it's backed by a 4 year warranty, which also covers the paint, that's OE quality colour coded and meets OEM standards, for added protection.





The strongest canopy in its class

The Aeroklas Injecta Canopy uses the combination of high-quality materials and superior manufacturing processes to create the strongest 4x4 canopy. Manufactured using Reaction Injection Moulding (RIM), the Aeroklas Injecta Canopy boasts more strength and flexibility than traditional single shell ABS or fibreglass canopies. The unique injecta process also provides incredible impact resistance and the ability to be easily reshaped after impact.



CENTRAL LOCKING
REAR DOOR USES
THE STANDARD
OEM FOB WITH
NO ADDITIONAL
KEY REQUIRED.



REAR DOOR AND SIDE
WINDOWS ARE KEY
LOCKABLE.



ROOF RACK
COMPATIBLE AND
RATED TO 120KG.
(APPLIED WITH RHINO
RACK SYSTEM)



**PROVEN C-CLAMP
MOUNTING SYSTEM**
MEANS NO DRILLING
INTO YOUR TUB.



MANUFACTURED USING REACTION
INJECTION MOULDING (RIM) TO BE
STRONGER AND MORE FLEXIBLE
THAN TRADITIONAL ABS
OR FIBREGLASS.



**OE QUALITY
COLOUR CODING**



**PATENTED C-CLAMP
MOUNTING SYSTEM**



**PROVEN C-CLAMP
MOUNTING SYSTEM**

4YR

**4 YEAR
WARRANTY***

*4 year on shell, 1 year on componentry. Excludes glass.

Convenient and intuitive features

On top of the enhanced durability and strength, the Aeroklas Injecta Canopy boasts a plethora of welcome features and convenient additions that seamlessly integrate with your 4x4. Upon installation, vehicle access is made simple with a drop-down front window and dual lift-up side windows (standard option), that are all key lockable for added security. It also features a central locking rear door, that uses the standard OEM fob with no additional key required, and an internal anti-entrapment release handle for added peace of mind.



AEROKLAS ROLLER COVER.

A roller cover is a simple way to add cargo protection and greater functionality to your ute.

An Aeroklas Roller Cover keeps your belongings safe and secure, while it can be retracted to allow you to retain the same open air cargo storage capability as a regular tub. Featuring a black anodised aluminium body that's designed to be tough yet lightweight, the Aeroklas Roller Cover is a secure and stylish storage solution.

Each roller cover has an adjustable spring tension roller system that allows you to select an opening speed that suits you, while it also includes a three-stage locking mechanism and pull strap for easy opening and closing. Meanwhile, an integrated four-point drainage system maximises water dispersion to make washing simple and rain a non-issue.



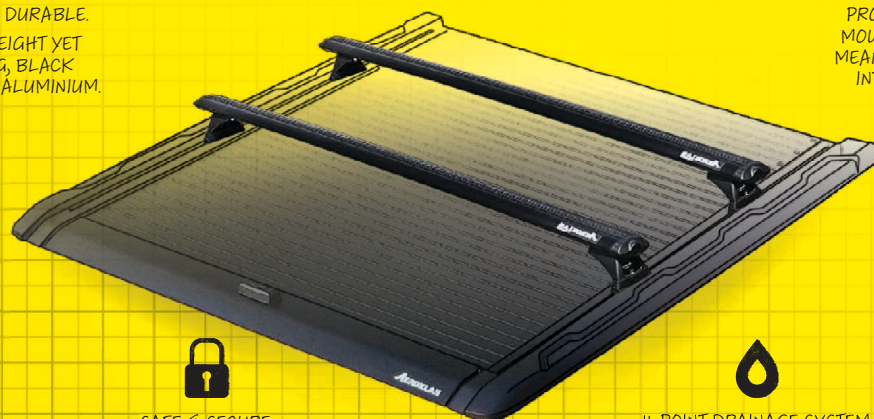
**2 year on roller cover, 1 year on componentry.*



TOUGH & DURABLE.
LIGHTWEIGHT YET STRONG, BLACK ANODIZED ALUMINIUM.

CROSS BAR COMPATIBLE.
*ROOF RACKS AVAILABLE SEPARATELY.

PROVEN C-CLAMP MOUNTING SYSTEM
MEANS NO DRILLING INTO YOUR TUB.



SAFE & SECURE
3-STAGE MECHANISM. FULLY OPEN, HALF OPEN AND FULLY CLOSED AND LOCKED.

4-POINT DRAINAGE SYSTEM.
FOR MAXIMUM WATER DISPERSION.

UTE LINER.

Designed to protect and made to last, Aeroklas Ute Liners are the perfect shield for the inner side of your ute bed.

Aeroklas Ute Liners provide a protective coating to shield the inner side of your vehicle's tray from damage. Constructed from premium grade HDPE (High Density Polyethylene), Aeroklas Ute Liners are strong, flexible, and ultra-durable to reduce the risk of chipping and cracking.

Aeroklas Ute Liners are available in over rail and under rail configurations.*



Under rail



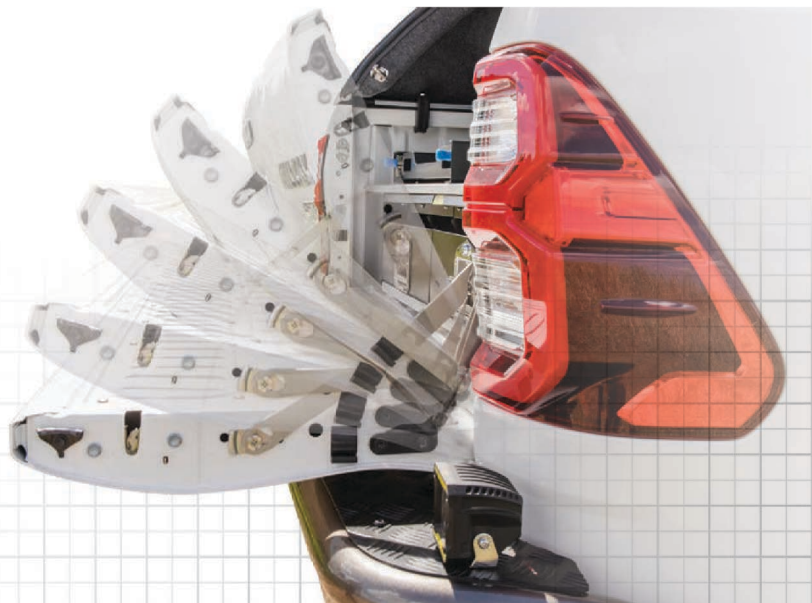
Over rail

**Model dependent.*



TAILGATE ASSIST.

Aeroklas' Tailgate Assist makes accessing your canopy easier and safer than ever. Tailgate Assist utilises a unique design that reduces the weight of the tailgate by 70% to the person who's opening and closing it. This is perfect for easy one-handed operation and makes the tailgate safer by stopping it from slamming.



**NO-DRILL
INSTALLATION**

3YR

**3 YEAR
WARRANTY**



**AUSTRALIA WIDE
SUPPORT**





TJM 4X4 EQUIPPED

STORAGE & CARGO

Whether you're packing the car for work, hitting the road for a week away or touring around Australia for months on end, the worst thing you can do is just throw everything in the back, without straps or tie down points for bigger or fragile gear, and simply hope for the best in transit.

That's why organised cargo and storage is absolutely vital for all kinds of travel.

From drawers to utility cases, clear top storage bags to all the ratchet straps, anchor tracks and specialised tie downs you could ask for, kitting out your 4x4 with TJM storage solutions is an absolute no brainer.

Aside from making it easier to find your gear to get to work quicker or make setting up and packing down your campsite almost effortless, just knowing all your essential gear is safe and secure, including all the beer in the fridge, provides that peace of mind you're looking for.

With TJM cargo and storage solutions, you can focus on that next rocky climb or tricky waterway without having to worry about what's going on in the back.



Aeroklas Drawers are a robust storage solution for your 4x4 - whether you're on the job site, on the road or at camp.



AEROKLAS DRAWERS.

Aeroklas Drawers make organising and accessing cargo simple. Utilising a twin drawer, fixed top configuration and a rattle-free sealed runner system, Aeroklas Drawers are built for reliable performance whether you're on the job site, on the road or at camp.

Built around a galvanised steel chassis that's finished with glass-filled polypropylene top panels and wing kits, Aeroklas Drawers are lightweight yet strong. Each drawer has a load rating of 45kg while the drawer top has a load rating of 100kg – both of which are finished in hard-wearing marine carpet. Heavy-duty stainless-steel latches with slam-shut functionality are integrated into a rugged black powder-coated fascia, giving Aeroklas Drawers a high-end look to complement their utility.





UTILITY CASES.

Engineered for heavy-duty use and made to last, the TJM Utility Case range is the ideal storage solution for travellers, tradesmen and more.

Manufactured from UV-resistant food-grade polyethylene (LLDPE) that perfectly balances strength and flexibility, each case features stainless steel hinges and rubber lid seals to prevent water, dust and dirt ingress affecting your cargo. To make transportation simple, each case features front and side tie-down slots and spring-loaded rubber handles. Available in three different sizes with a simple stackable design, the TJM Utility Case range will keep your cargo protected and secure in all conditions.

- Available in three sizes: 50L, 90L, 160L
- UV-resistant food-grade LLDPE
- Recessed rubber-coated handles
- Recessed lockable steel latches with keeper
- Front and side slots to fit up to 40mm-wide straps
- In-built pressure release valve



CLEAR TOP STORAGE BAGS.

Available in a range of sizes, the TJM Clear Top Storage Bags make light work out of organising all of the essentials. Backed by an ultra-tough 320gsm ripstop canvas and reinforced bottom, each bag comes topped with a clear PVC lid so you can sort through your gear in seconds.



GEAR BAGS.

Ideal for storage and made to be durable, the TJM Gear Bag range comes in a variety of capacities.



REAR WHEEL BAG.

Whether you've just set up shop or are heading back on the road, the TJM Rear Wheel Bag will keep your cab nice and clean. Made from 1200D Oxford fabric, this rear wheel bag features a 50L main storage compartment, two 6L side pockets and an easy to attach buckle system so you've got a simple and effective way to store rubbish, wet and dirty gear, recovery equipment and more.



TJM ANCHOR TRACKS.

Made from tough lightweight aluminium, the TJM Anchor Tracks provide a simple and effective way of securing cargo in the back of your vehicle. Backed by a working load limit of 340kg, per anchor, for instant peace of mind, the anchor tracks are fully adjustable in increments of 25mm, are available in 610mm and 1400mm lengths, and come with all the mounting hardware you need.

TJM RATCHET STRAPS.

The TJM Ratchet Straps will quickly become your strap of choice when hauling large or heavy items. Sold in a set of two, each ratchet strap has high lashing capacity of 400kg and a welcome 5m of length ensuring fridges, kayaks, jet skis and other bulky cargo you're transporting remain firmly in place. It also features ergonomic rubber moulded handles and release levers, and 2 soft loops straps for situation S hooks aren't practical.

TJM FRIDGE TIE DOWNS.

Picture this, you've just loaded up your onboard fridge with plenty of food, beer and tackle for when you arrive at that campsite. However, along the way there's tons of rocks, uneven terrain and treacherous climbs causing your fridge to roll around the entire cab. With TJM Fridge Tie Downs your fridge won't budge an inch! They're flawlessly easy to use thanks to their cam-locking system and each strap offers a massive 450kg lashing capacity to guarantee long-lasting performance.





AUSTRALIA'S TOP TOURING TRAILS.

There are plenty of scenic spots and plenty of lengthy off-road trips in Australia, but few combine both elements quite as well as these classic touring trails. So, get ready to grab a map, pack the car and head for the horizon.



Flinders Ranges, SA.

Binns Track

Starting in Mt Dare on the edge of the Simpson Desert and finishing in the small town of Timber Creek, Binns Track is an all-encompassing 4WD trek through Central Australia. Along the way you'll encounter small towns and abandoned stations, head-turning ranges and dusty plains, testing corrugations and newly sealed roads; sometimes each pole is separated by a few kilometres, sometimes by a few days.

The Flinders Ranges

Dotted with red folded ranges that have never failed to turn a head, the Flinders Ranges are one of the country's most awe-inspiring off-road destinations. The journey from Wilpena Pound to Arkaroola – the former in the South Flinders Ranges and the latter in the North Flinders Ranges – takes in the most impressive peaks in the region. This trip also gives travellers the chance to visit stunning gorges, old stations and ruins and try their hand at some tougher tracks, most of which can be found through the northern section around Vulkathunha-Gammon Ranges National Park.

The Oodnadatta Track

Less of a 4WD challenge and more of an Outback exploration tour, the Oodnadatta Track should be on everyone's off-road bucket list. The drive itself combines stunning scenery with big dollops of history, which in large part is thanks to its path that runs alongside the Old Ghan Railway. Along the way you'll encounter rich red landscapes, multiple ruins and attractions like the Pink Roadhouse and the Painted Desert.



Savannah Way, Top End.

The Savannah Way

The Top End's classic touring route has been well grooved by countless travellers over the years, and with good reason: the drive in its entirety can take you through five world heritage sites and 15 national parks across three states and territories over a mammoth 3,700km. The broadest definition of the Savannah Way is the route between Cairns and Boome (though many also say it's between Normanton and Mataranka), between which is a highlight reel of things to see and do including lush Outback oases, crystalline artesian springs, deep red gorges and remote campsites in the middle of nowhere.

Darling River Run

The longest river system in Australia has a firm place in the country's pastoralist history, while its course intersects with a heap of interesting and unique off-road regions. The drive loosely follows the river, which itself comes in contact with established ports that sprung up in days gone by: Bourke, Wentworth and Tilpa to name a few. Aside from these classic Outback towns, the journey along the Darling River also gives you the chance to head off on side trips to Mungo, Kinchega and White Cliffs national parks – each of which have unique arid landscapes, wildlife and tracks to discover.



Somewhere off the Gibb River Road, Kimberley WA.

The Gibb River Road

Once an unknown frontier but now a fan favourite among 4WD tourers, the Gibb River Road's weather-worn red gorges, countless side trips and variety of landscapes makes it the ultimate off-road adventure. In truth, the Gibb's popularity has drained some of its mystery; the sealed sections which are slowly inching across its length prove this. However, despite this knock, the heights the Kimberley reaches are simply higher than most any other off-road destination on Earth. In fact, all told a trip down the Gibb River Road can explode from the standard 650km to over 3000km with all its side trips included, within which are places like Mitchell Falls, Walcott Inlet, Mornington Wildlife Sanctuary and much more.

TJM 4X4 EQUIPPED

LIGHTING





ULTIMA 215 & 180 MK2 DRIVING LIGHTS.

TJM Ultima LED Driving Lights are the ultimate driving light for any adventure. Available in two sizes - 180mm and 215mm - which utilise a perfectly balanced combination beam pattern. Ultima driving lights deliver outstanding light output while boasting a ruggedised construction. Each light features premium Cree® XP-G2 LEDs, which are expertly directed by an aluminium metallised reflector with precisely scalloped parabolas.

While delivering unparalleled control and performance, TJM Ultima LED Driving Lights are also exceptionally durable and versatile thanks to their pressure die cast aluminium housing, tool-free vertical adjustment and hard-coated polycarbonate lenses and lens protectors.



TJM ULTIMA 215 LIGHTS (SHOWN BELOW)

33 X 5W (165W) OSRAM LEDS

LEDS PRODUCING 165 WATTS OF PURE WHITE LIGHT (5700°K).



21,780 LUMENS
15,410 EFFECTIVE



11LUX @ 1093M
(TWO LAMPS)

TJM ULTIMA 180 LIGHTS

24 X 5W (120W) OSRAM LEDS

LEDS PRODUCING 120 WATTS OF PURE WHITE LIGHT (5700°K).



15,000 LUMENS
8,889 EFFECTIVE



11LUX @ 812M
(TWO LAMPS)

CUSTOMISABLE APPEARANCE

CUSTOMISE THE LOOK OF YOUR TJM ULTIMA 215 LED DRIVING LIGHTS. WITH YOUR CHOICE OF THREE INNER TRIM PIECES - TJM YELLOW, CAMO GREEN AND STEALTH BLACK.

GORE-TEX®
BREATHER

PRESSURE DIE CAST ALUMINIUM HOUSING
LIGHT WEIGHT AND SUPER STRONG.

TOOL FREE VERTICAL ADJUSTMENT
UNIQUE TOOL-FREE VERTICAL ADJUSTMENT AFFORDS QUICK ON-THE-FLY BEAM CORRECTION.

POLYMER RUBBER MOUNTING AND SUSPENSION SYSTEM
SUPERIOR MOUNTING BRACKETRY SUSPENSION SYSTEM UTILISES POLYMER RUBBER TO SUSPEND THE LAMP MAKING IT IMPERVIOUS TO SHOCK AND VIBRATION HOLES WHERE APPLICABLE.

LED FRONT POSITION LIGHT PIPE.

PRESSURE DIE CAST MOUNTING BRACKET.

THREE BOLT MOUNTING WITH STAINLESS STEEL HARDWARE
MULTI-SLOT 3-BOLT MOUNTING OPTIONS ENSURES SUITABILITY FOR ALL BULL BAR AND NUDGE BAR MAKES AND MODELS.



TOOL FREE
VERTICAL ADJUSTMENT



PRESSURE DIE-CAST
ALUMINIUM



HARD COATED
POLYCARBONATE LENS



3X
CUSTOMISABLE INNER
TRIM PIECES



TINTED & CLEAR LENS
PROTECTORS INCLUDED

WIRING
HARNESS
INCLUDED

5YR
5 YEAR
LED WARRANTY

Engineered to survive

- Constructed from lightweight, super strong pressure die cast aluminium for uncompromised strength and rugged durability.
- Built-in 'Active Thermal Management System' (ATMS) enables TJM Ultimas to run harder for longer.
- Fully sealed against water and dust ingress (IP66 & IP67) utilising a genuine Nitto breather vent and integrated DT connector.
- Virtually unbreakable hard-coated polycarbonate lens and see-through lens protectors for stone and debris protection.





Unique fit & adjustment

- Tool-free vertical adjustment affords quick on-the-fly beam correction via an ergonomic aluminium adjuster knob.
- Multi-slot three-bolt mounting options ensures suitability for all bull bar and nudge bar makes and models.
- Superior mounting bracketry suspension system utilises polymer rubber to suspend the lamp, making it impervious to shock and vibration.

Now with upgraded performance the TJM Ultima 215 & 180 MK2 driving lights produce up to 20% more light and 30% longer beam over MK1 TJM Ultima driving lights.

TJM ULTIMA 215 MK1 DRIVING LIGHTS

TJM ULTIMA 215 MK2



Unparalleled performance

- Class-leading hybrid beam pattern combines volume for off-road 4WD use and long range performance for transport.
- Highly polished, super-efficient aluminium metallised reflector utilising precisely scalloped parabolas for ultimate control and performance.
- Signature in-built LED light pipe meets ECE requirements for front position light improving daytime driving visibility and safety.



SEEKER SERIES.

230 & 180 Driving Lights

Featuring advanced Osram LED technology, die cast aluminium housing and a strong lumen output, TJM Seeker Series driving lights have plenty to offer discerning explorers who are in search of a quality set of driving lights. Available in 180mm and large 230mm variants, each Seeker Series driving light has an IP68 water and dust-proof rated housing, an integrated LED park light strip for additional safety and stainless steel mounting bracketry and hardware for secure mounting.



TJM SEEKER SERIES 230 LIGHTS (SHOWN BELOW)

34 X 4W (102W) OSRAM LEDS
HIGH OUTPUT OSRAM LEDS PRODUCE
A CRISP WHITE LIGHT (6000°K).



9,180 LUMENS
8,056 EFFECTIVE



1LUX @ 892M
(TWO LAMPS)

TJM SEEKER SERIES 180 LIGHTS

16 X 3W (48W) OSRAM LEDS
HIGH OUTPUT OSRAM LEDS PRODUCE
A CRISP WHITE LIGHT (6000°K).



4,320 LUMENS
3,901 EFFECTIVE



1LUX @ 761M
(TWO LAMPS)

FINELY TUNED SPOT BEAM
PATTERN PROVIDES OPTIMAL
LIGHT PENETRATION TO SEE
WHAT'S AHEAD OF YOU.



DIE CAST
ALUMINIUM
HOUSING.

STAINLESS STEEL
MOUNTING BRACKET
WITH STAINLESS
STEEL HARDWARE.

INTEGRATED LED
PARK LIGHT STRIP
IMPROVES VISIBILITY
AND SAFETY.

MULTI-VOLTAGE INPUT
SUITABLE FOR BOTH 12 AND
24V VEHICLES.

MULTI-SLOT 3-BOLT
MOUNTING OPTIONS ENSURES
SUITABILITY FOR MOST
BULL BAR AND NUDGE BAR
MAKES AND MODELS.

12/24V
MULTI-VOLTAGE
INPUT

IP68
WATERPROOF &
DUSTPROOF

HARD COATED
POLYCARBONATE LENS

12V WIRING
HARNESS
INCLUDED

3YR
3 YEAR
WARRANTY



22" Light Bar

Powerful and versatile, two rows of 20 high output Osram 3W LEDs generate 5807 effective lumens and produces 1 lux at 555m, while its combo beam pattern generates an even spread of light around you.



21" Light Bar

A slim yet highly effective light bar that generates 3917 effective lumens and produces 1 lux at 438m. Its combo beam pattern creates a balanced spread of light from its 15 high-output Osram 3W LEDs.



9" Light Bar

Small but mighty, the TJM Seeker Series 9" Single Row Light bar produces 1 lux at 297m thanks to its advanced spot beam pattern. A lightweight aluminium housing surrounds 6 high output Osram 3W LEDs.



Pod Lamp

A compact work light that produces over 700 effective lumens thanks to its 4 high output 3W Osram LEDs. Its flood beam makes it perfect for lighting up what's in front of you with a broad and even spread of light.



Slimline Work Lamp

This low-profile work lamp sports 6 high output Bridgelux 3W LEDs that create 1150 raw lumens in a wide and even flood beam, making it perfect for lighting up broad areas on either side of your vehicle.

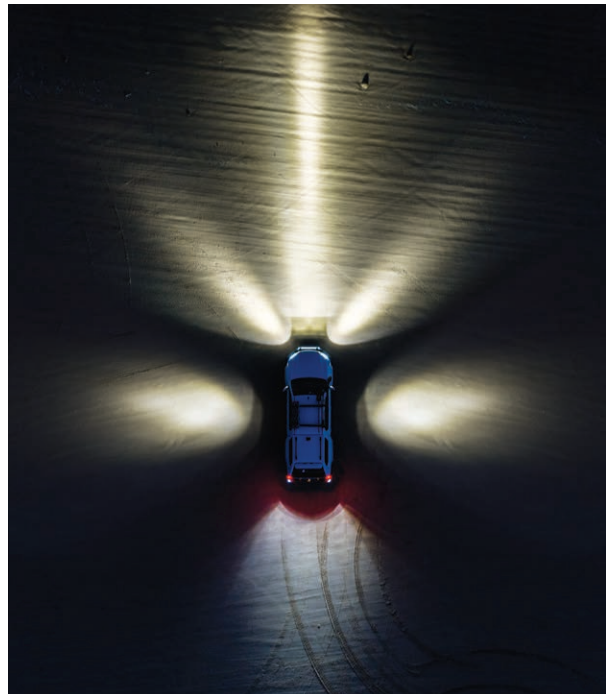


Twin Work Lamp

Perfect for trackside and campsite illumination, the TJM Seeker Series Twin Work Lamp produces 565 effective lumens thanks to a pair of 5W Cree® LEDs that generate a broad flood beam.



TJM Seeker Series Rock Lights fitted to the TJM Rock Sliders.



Front: TJM Seeker Series 21" Light Bar and Side Shooters. Side: TJM Seeker Series Twin Work Lamps. Rear: TJM Seeker Series Pod Lamps.



Side Shooters

The TJM Seeker Series Side Shooter produces 2,850 raw lumens thanks to its 15 carefully arranged 2W Osram LEDs. Available in pairs, its spot beam configuration generates powerful light penetration that makes it perfect for camping, off-road and on the job use.



Rock Light

Discreet and versatile rock lights that produce crisp, white light thanks to their innovative Cree® LED technology. Featuring three 3W LEDs that produce 810 raw lumens in a wide, functional flood beam, the TJM Seeker Series Rock Lights come with flat and curved mounting pads.



Wiring Harness

This plug and play wiring harness makes installing TJM lights easy. Included are HB3 and H4 adaptors for high beam circuitry, DT weatherproof connectors, a waterproof fuse holder with 30A fuse and an illuminated rocker switch.



Tube mounts

These tube mounts, which are made from extruded aluminium and finish in durable black powder coat, allow for easy installation of TJM driving lamps, light bars and auxiliary lights to nudge bars and bull bars.

TJM 4X4 EQUIPPED

PRO LOCKER





PRO LOCKER.

The ability to lock a differential gives you instant traction in places or conditions you would otherwise have none, giving your 4x4 far more off-road potential.

The TJM Pro Locker is a highly advanced differential lock. With the flick of a switch, a TJM Pro Locker sends compressed air to engage a lock ring that links the carrier and the side gears, resulting in equal drive to both axles. Every TJM Pro Locker is designed and manufactured to ensure peak performance when you need it most, empowering you to go further and take on four-wheel drive challenges with confidence.

Constructed from high-grade SG iron with larger pinion gears and longer crown wheel bolts, the TJM Pro Locker is the pinnacle of strength. This strength translates to ultra-reliable performance and durability on the track, allowing you to consistently conquer off-road obstacles with ease.



**DESIGNED & ENGINEERED
IN AUSTRALIA**

**PATENTED
FIELD PROVEN 20YR
PATENTED DESIGN**

**QUALITY
ASSURED**

**THICKER MATERIALS
SUPERIOR STRENGTH**

**5YR
5 YEAR
WARRANTY**



DIFFERENTIAL CASING
HIGH STRENGTH SG IRON
PIECES HOLD THE SOLID ONE
PIECE CROSS SHAFT & 4 PINION
GEARS TOGETHER BY 8 HIGH
GRADE BOLTS.



FLANGE CAP ASSEMBLY
TJM'S EXTRA THICK FLANGE
CAP FEATURES LONGER CROWN
WHEEL BOLTS FOR EXTRA
STRENGTH. (WHERE APPLICABLE).



SIDE GEARS
PRECISION CUT LARGER
SIDE GEARS WITH 10MM
ENGAGEMENT WHEN LOCKED.



PINION GEARS
THICKER THAN STANDARD CASE
HARDENED THRUST WASHERS
THAT ARE PERFECTLY SHAPED
TO THE INTERNAL SPIDER GEARS.



PRO LOCKER SWITCHES
THE BRIGHTLY COLOURED
SWITCHES CLEARLY SHOW
WHEN THE LOCKER IS
ENGAGED OR DISENGAGED.



HEAVY DUTY AIRLINE
THIS COMES STANDARD WITH
THE TJM PRO LOCKER.



LOCK RING
WHEN ACTIVATED THE CASE
HARDENED LOCKING RING
SHARES THE FORCE INTERNALLY
& EXTERNALLY INCREASING ITS
LOCKING STRENGTH.



**HARDENED ONE PIECE
CROSS SHAFT***
THIS HARDENED ONE PIECE
CROSS SHAFT IS THE KEY
STRENGTH OF THE TJM
PRO LOCKER.



HARDENED SELECTOR RING
THE ALL METAL, HARDENED
SELECTOR RING CONNECTS
TO THE LOCK RING VIA 4
METAL POSTS.



ACTUATOR
THE UNIQUELY DESIGNED
ACTUATOR WORKS LIKE
A MOTOR PISTON. THE
FORK SITS ON TOP OF THE
SELECTOR RING GUIDING IT
ACROSS WHEN ENGAGING OR
DISENGAGING.

prolocker
LOCKING DIFFERENTIALS BY TJM



SOLENOID VALVE
DESIGNED ESPECIALLY FOR
TJM. SEALED AGAINST DUST &
MOISTURE TO IP65 STANDARDS.
MACHINED & ANODISED FROM
BILLET ALUMINIUM.



PRO LOCKER DIFF BREATHER KIT.

Protecting either your front or rear differentials, transfer case or even winches from water ingress, is flawlessly easy with the TJM Pro Locker Diff Breather Kit. Equipped with everything you need to extend up to 4 factory breathers, this simple yet effective design significantly reduces the risk of damage to your 4x4 by relocating the factory breather to a higher point in the vehicle.

Constructed from CNC machined aluminium, the TJM Pro Locker Diff Breather Kit comes in a compact, mountable design for easy positioning in tight engine bays, which significantly reduces the risk of damage to the tube and makes maintenance easy. It also comes with all the parts you need to suit most applications and adaptors for easy installation in the Ranger, BT-50, Triton and Pajero.







TJM 4X4 EQUIPPED

POWER & COMMUNICATIONS

If you're travelling off-road, there's a good chance you're travelling to sparsely populated or remote places where being prepared means being self-sufficient. The more prepared you are, the further afield you can travel and the longer you can stay in the great outdoors.

A complete power solution system and communications setup in your 4x4 allows you to remain self-sufficient on the road. Access to power will allow you to keep the lights on at night, keep your food cold and so much more. Meanwhile, communications are key for being able to contact other travellers or reach out to nearby towns in the rare event of an emergency.

Having both at your disposal will open up more destinations to you and allow you to travel with peace of mind, and the good news is that every TJM store has the gear and expertise to help power your next adventure.





0.5W UHF CB RADIOS.

The TJM 80 Channel UHF CB Radio pair gives you a compact and reliable communication tool to use anywhere, anytime. Boasting a range of up to 3km and Duplex (range extender) functionality, each 0.5W unit features 38 CTCSS codes and 83 DCS codes to keep conversations private, while they're also VOX capable for hands-free use. As a bonus, each unit has a built-in torch function in addition to a backlit display, making them perfect for kids, campsites and convoys.

3km

RANGE UP TO 3KM (DEPENDENT ON TERRAIN AND ATMOSPHERIC CONDITIONS)



5W PROFESSIONAL UHF CB RADIO.

Constructed from tough materials and packed with powerful functionality, the TJM Professional 80 Channel UHF CB Radio is a quality communication tool to use at work or off-road. Based around a sturdy aluminium die cast chassis, its 5 Watt output provides a communication range of up to 15km. Powered by a rechargeable Li-ion 1500mAh battery, each radio comes with a base charger, earphone, car charger, belt clip and hand strap to get you fully equipped for your journey ahead.

5W
5 WATTS

IP67
WATERPROOF &
DUSTPROOF

DIE CAST
CHASSIS

3YR
3 YEAR
WARRANTY



WE'VE GOT THE POWER.

Want to travel further with more confidence and comfort? Ask us about finding the right power management system for your needs. Our staff can help you choose the system that's right for you and then expertly install it from start to finish, giving you the power to keep your drinks cold, keep the lights on and keep the journey going.



JUMPSTARTER.

If you're traveling alone and your battery goes dead, the TJM Jump Starter & Power Bank will get you back on the road in seconds. Suitable for almost every petrol & diesel vehicle, this essential piece of kit can jump start multiple vehicles before having to be recharged, which only takes 1.5 hours using the cigarette lighter, can charge your portable devices and even power 12V air compressors using the included adapter.



DC/SOLAR BATTERY CHARGER.

The TJM DC/Solar Battery Charger allows you to charge your 12V auxiliary battery on the go. Able to simultaneously charge from both solar and 9-32V alternator inputs – meaning it can function as an MPPT solar controller – it's also shock, vibration and dust proof (and water resistant), making it perfect for in-vehicle or under-bonnet installation. Class-leading features include safe operation at high temperatures, intuitive 3-stage charging and full compatibility with GEL, AGM, WET and calcium batteries.



BATTERY TRAYS.

TJM Battery Trays are carefully engineered to ensure you get the right sized battery mounted in the right place. Constructed from 2mm thick steel sheet, all TJM Battery Trays incorporate strategic folds and welds which make them incredibly strong, while they're also corrosion resistant for up to 500 hours.

JOIN THE CLUB.

Club TJM is made for 4x4 owners and adventurers of all kinds who want exclusive members-only benefits from TJM. From saving on your next purchase to reading stories from the road less travelled, Club TJM has something for everyone. So, sign up now and join the club!



SNEAK PEEKS

From new vehicle accessories to camping gear, we're always releasing new products – and Club TJM members get to hear about them first.



SPECIAL OFFERS

Get notified when we launch special product offers and new promotions that will help you get 4x4 equipped with TJM.



EXCLUSIVE COMPETITIONS

Club TJM members get exclusive entry to mouth-watering competitions that will gear you up and fuel your inner explorer.



ONLINE QUOTING

Put together your 4x4 wish list and send it off to your local TJM to get a finalised quote, all from the comfort of your own home.



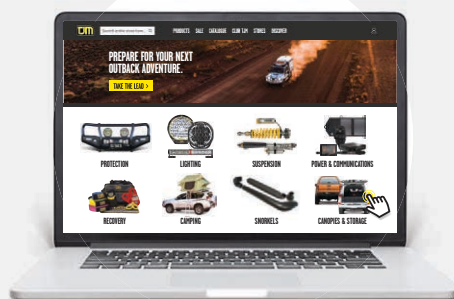
EXCLUSIVE CONTENT

Find out where to go and how to get there with exclusive content that's full of information and inspiration.





GET 4X4 EQUIPPED ONLINE WITH TJM.



On the TJM website you can buy a range of products from TJM and other leading outdoor adventure brands and get them delivered direct to your doorstep.



The TJM website has advanced online quoting functionality for fitted accessories and larger items, allowing you to add items to your cart and get a finalised quote (fitting included) from your local TJM store.



After accepting your online quote, you can head in-store to pay for your purchase and organise any fitment work you want completed by our expert staff.



FINANCE AVAILABLE.

Buy now, pay later with Zip. Enjoy interest-free payments on purchases at TJM so you can get equipped with anything from a camp chair to a full 4x4 fit-out, today. With Zip, you can own what you love and pay how you like.



WE'RE SOCIABLE.

At TJM, we like to keep the journey going off-road and online. Head over to our social media channels and follow along to get the latest product news, travel inspiration and tips from the adventure experts.



WE'VE GOT YOUR BACK.

We have a nationwide network of stores in key locations all across Australia, so you know that, no matter how far you roam, you'll be supported by TJM.

Visit tjm.com.au to find your closest TJM distributor.



TAKE THE LEAD.

Facebook Twitter YouTube TJM4x4 | www.tjm.com.au